
TECHNICAL MANUAL
ORGANIZATIONAL MAINTENANCE REPAIR PARTS
AND SPECIAL TOOLS LISTS
SUBSTATION, TRAILER MOUNTED, 500 KVA,
AC, 4160-416Y/240V, 208Y/120V
3 PHASE 50/60 HERTZ

AVIONICS MODEL 950-2200A
FSN 6120-422-1047

HEADQUARTERS, DEPARTMENT OF THE ARMY
APRIL 1973

	Page	Illus Figure
Section I INTRODUCTION		
II PRESCRIBED LOAD ALLOWANCE (NOT APPLICABLE)		
III REPAIR PARTS LIST	1	
Group 01 Accessories	1	
Box, Storage with trays		1
Box, storage without trays		2
Rall, guard assembly		3
Sling, bridle four leg		4
Sling, single with hook		5
Bar, spreader		6
Ladder, access		7
Rod, ground		8
Group 02 Clamp, hot line size O	2	
High Voltage Section		
Doors, front and rear panels		11
Connector, terminals and lightning arrester		12
Block, terminal and heater strip		13
Panel, side transition		14
Group 03 Transformer	8	
Valve, drain		16
Gage, pressure-vacuum		17
Indicator, oil temperature		18
Indicator, winding temperature		19
Gage, liquid level		20
Valve, pressure relief		21
Pipe, oil fill		22
Covers, hand hole		23

	Page	Illus Figure
Group 04. Low Voltage Section.	5	
Gasket, transition.25
Switch, toggle and duplex outlet26
Holder, lamp.27
Holder, fuse 30A 600V 3 pole.28
Holder, fuse 30A 600V 2 pole..29
Filter, air.30
Block, terminal 4 position31
Block, terminal 6 position32
Block, terminal 12 position33
Heater, strip34
Cord, electrical extension35
Panel, access transition36
Eyebolt,ground..1 2
Lug, terminal 2 barrel.37
Group 05. Cable Reels	7	
Locking assembly, cable reefs.38
Reel, cable assembly.39
Stand, cable reel outer and center40
Group 06. Semi-Trailer	8	
Undercarriage assembly.41
Box, conversion.49
Bumper assembly, rear50
System, air brake, pallet.5 1
Group 07. Kits10	
Section IV. SPECIAL TOOLS, TEST AND SUPPORT EQUIPMENT (NOT APPLICABLE!		
V. FEDERAL STOCK NUMBER AND REFERENCE INDEX		53

Section I.
INTRODUCTION

1. Scope

This manual lists repair parts, special tools, test and support equipment required for the performance of organizational maintenance of the mobile substation.

2. General

This Repair Parts and Special Tools List is divided into the following sections:

a. *Prescribed Load Allowance (PLA) - Section II.*

b. *Repair Parts Section III.* A list, in figure and item number sequence, of repair parts authorized the organization level for the performance of maintenance, including those items which must be removed for replacement of the authorized item. Items, except kits and sets, are listed by assembly group in top down breakdown sequence. Repair parts kits and sets are listed separately as Group 07 at the end of the Repair Parts List without regard to the assembly group to which they belong. Components of the kits and sets are listed in their proper sequence in the assembly group to which they belong are referenced to the FSN of the kit or set.

c. *Special Tools, Test and Support Equipment - Section IV.* (Not applicable.)

d. *Federal Stock Number and Reference Number Index - Section V.* A list of Federal Stock Numbers in ascending numerical sequence followed by a list of reference numbers in alpha-numeric sequence, cross-referenced to the illustration figure number and item number.

NOTE

Items not illustrated are cross-referenced to group number

3. Explanation of Columns

The following provides an explanation of columns in the tabular lists in sections II, III, and IV:

a. *Source, Maintenance, and Recoverability Codes (SMR):*

(1) Source code indicates the source for the listed item. Source Codes are:

Code	Explanation
P	Repair Parts, special Tools and Test Equipment supplied from GSA/DSA, or Army Supply System, and authorized for use at indicated maintenance levels.
P2	Repair Parts, Special Tools and Test Equipment which are procured and stocked for insurance purposes because combat or military essentiality of the end item dictates that a minimum quantity be available in the supply system.
P9	Assigned to items which are NSA design controlled: unique repair parts, special tools, test, measuring, and diagnostic equipment which are stocked and supplied by the Army COMSEC Logistic System and which are not subject to the provisions of AR 380-41.
P10	Assigned to items which are NSA design controlled: special tools, test, measuring, and diagnostic equipment for COMSEC support which are accountable under the provisions of AR 380-41 and which are stocked and supplied by the Army COMSEC Logistic System.
M	Repair parts, Special Tools and Test Equipment which are not procured or stocked as such in the supply system but are to be manufactured at indicated maintenance levels.
A	Assemblies which are not procured or stocked as such, but are made up of two or more units. Such component units carry individual stock number and descriptions, are procured and stocked separately and can be assembled to form the required assembly at indicated maintenance levels.
X	Parts and assemblies that are not procured or stocked because the failure rate is normally below that of the applicable end item or component. The failure of such part or assembly should result in retirement of the end item from the supply system.
X1	Repair parts which are not procured or stocked. The requirement for such item will be filled by the next higher assembly or component.
X2	Repair Parts, Special Tools and Test Equipment which are not stocked and have no foreseen mortality. The indicated maintenance level requiring such repair indicated maintenance level requiring such repair parts will attempt to obtain the parts through cannibalization or salvage. The item may be requisitioned with except data, from the end item manager for immediate use.
G	Major assemblies that are procured with PEMA funds for initial issue only as exchange assemblies at DS and GS level. Those assemblies will not be stocked above the DS and GS level or returned to depot supply level.

NOTE

Cannibalization or salvage may be used as a source of supply for any items source coded above except those coded XI and aircraft support items are restricted by AR 700-42.

(2) Maintenance code indicates the lowest level of maintenance authorized to install the repair part/and /or use the special tool or test equipment for each applic action. Capabilities of higher maintenance levels are considered equal or better. Maintenance Codes are:

Code	Explanation
C.....	Crew/Operator
O.....	Organizational maintenance.

(3) Recoverability code indicates whether unserviceable items should be returned for recovery of salvage. Items not coded are nonrecoverable. Recoverability codes are:

Code	Explanation
R	Repair parts assembly and components), special tools and test equipment which are considered economically repairable at direct and general support maintenance.
S	Repair parts, Special Tools, and Test Equipment and assemblies which are economically repairable at DSU and GSU activities and which are economically repairable at DSU and GSU activities and which normally are furnished by supply on an exchange basis. When items are determined by a GSU to be uneconomically repairable, they will be evacuated to a depot for evaluation and analysis before final disposition.
T	Higher dollar value recoverable repair parts, special tools and test equipment which are subject to special handling and are issued on an exchange basis. Such items will be repaired or overhauled at depot maintenance activities only. No repair will be accomplished at lower levels.
U	Repair Parts, Special Tools and Test Equipment specifically selected for salvage by reclamation units because of their precious metal content, critical materials, high dollar value or reusable casings or castings.

b. Federal Stock Number. This column indicates the Federal stock number assigned to the item and will be used for requisitioning purposes.

c. Description. Indicates the Federal item name and a minimum description required to identify the item. The last line indicates the reference number followed by the applicable Federal Supply Code for manufacturer (FSCM) in parentheses. The FSCM is used as an element in item identification to designate manufacturer or distributor or Government agency, etc., and is identified in SB 708-42. Items that are included in kits and sets are listed below the name of the kit or set with quantity of each item in the kit or set indicated in front of the item name.

d. Unit of Measure (U/M). Indicates the standard or basic quantity by which the listed item is used in performing the actual maintenance function. This measure is expressed by a two-character alphabetical abbreviation, e.g., ea, in, pr, etc., and is the basis used to indicate quantities and allowances in subsequent columns.

e. Quantity Incorporated in Unit. Indicates the quantity of the item used in the breakout shown on the illustration figure, which is prepared for an assembly group, or an assembly. A "V" appearing in this column in lieu of a quantity indicates that no specific quantity is applicable, e.g., shims, spacers, etc.

f. Fifteen-Day Organizational Maintenance Allowances

(1) Items authorized for use as required but not for initial stockage are identified with an asterisk in the allowance column.

(2) The allowance columns are divided into four subcolumns. Indicated in each subcolumn is the total quantity of special tools authorized for the number of equipment supported: (Not applicable .)

g. Illustration. This column is divided as follows:

(1) *Figure number.* Indicates the figure number of the illustration in which the item is shown.

(2) *Item number.* Indicates the callout number used to reference the item on the illustration.

(3) *Special Information*

a. Usable on codes are included in Column (3). Uncoded items are applicable to all models and/or serial number range. (Not applicable).

b. Parts which require manufacture or assembly at a category higher than that authorized for installation will indicate in the source column the higher category.

c. The following publications pertain to themobile substation and its components:

TM 5-6120-250-12 Operator and Organizational Maintenance Manual

LO 5-6120-250-12 Lubrication Order.

d. The illustrations in this manual are identical to the applicable illustrations published in the -34P, Direct and General Support Maintenance Repair Parts and Special Tools List Manual (Including depot maintenance repair part., and special tools, and the figure numbers are the same as appear in that manual. The -34P illustrations are given for a better understanding of the parts relationship, however, only those parts assigned maintenance code "O" are listed in the tabular list. Only illustrations containing organizational authorized items appear in this manual.

5. How to Locate Repair Parts

a. When Federal Stock Number or Reference Number is unknown:

(1) **First.** Using the table of contents determine the assembly group within which the repair part belongs. This is necessary since illustrations are prepared for assembly groups, and listings are divided into the same groups.

(2) **Second.** Find the illustration covering the assembly group to which the repair part belongs.

(3) **Third.** Identify the repair part on the illustration and note the illustration figure and item number of the repair part.

(4) **Fourth.** Using the Repair Parts Listing, find the assembly group to which the repair part belongs and locate the illustration figure and item number noted on the illustration.

b. When the Federal Stock Number or

Reference Number is known:

(1) **First.** Using the Index of Federal Stock Number and Reference Numbers find the pertinent Federal Stock Number or reference number. This index is in ascending FSN sequence followed by a list of reference numbers in ascending alphanumeric sequence, cross-referenced to the illustration figure number and item number.

(2) **Second.** Using the repair Parts Listing, find the assembly group of the repair part and the illustration figure number and item number referenced in the index of Federal stock Numbers and Reference Numbers.

6. Abbreviations

ASSY	ASSEMBLY
EA	EACH
G	GALLON
HEX	HEXAGON
HD	MEAD
I.D	INSIDE DIAMETER
IN	INCH
LG	LONG
STL	STEEL
STN	STAINLESS
THK	THICK

7. Recommendations for Maintenance Publications Improvements

You can improve this manual by calling attention to errors and by recommending improvements, using DA Form 2028 (Recommended Changes to Publications) or by letter, and mailing directly to Commanding General, U. S. Army Mobility Equipment Command, ATTN: AMSME-MPP, 4300 Goodfellow Boulevard, St. Louis, Missouri 63120. A reply will be furnished directly to you.

(1) SMR CODE	(2) FEDERAL STOCK NUMBER	(3) DESCRIPTION	(4) USABLE ON CODE	(5) UNIT OF MEAS	(5) QTY INC IN UNIT	(6) 15 DAY ORGANIZATIONAL MAINTENANCE ALW				(7) ILLUS- TRATION	
						(a)	(b)	(c)	(d)	(a)	(b)
						1-5	6-20	21-50	51-100	FIG. NO.	ITEM NO.
		SECTION III REPAIR PARTS FOR ORGANIZATIONAL MAINTENANCE									
		GROUP 01-ACCESSORIES									
X20		BOX: STORAGE, W/TRAYS 2001000361 (33469)		EA	1					1	1
X20		TRAY: STORAGE, UPPER 20010003P3 (33469)		EA	1					1	2
X20		TRAY: STORAGE, LOWER 20010003P4 (33469)		EA	1					1	3
P O	5310-763-8920	NUT, HEXAGON, FLAIN PLATED: FOR 5/8 IN. BOLT MS51967-20 (96906)		EA	4	*	*	*	*	1	4
P O		WASHER, HELICAL SPRING LOCK: FOR 5/8 IN. BOLT MS35338-50 (96906)		EA	4	*	*	*	*	1	5
P O		WASHER, BEVEL: FOR 5/8 IN. BOLT 9157340-5 (39428)		EA	2	*	*	*	*	1	6
P O	5305-724-5914	CAP SCREW, HEXAGON HEAD: 5/8-11 UNC X 3 IN. LG MS90725-168 (96906)		EA	2	*	*	*	*	1	7
P O	5305-051-0827	CAP SCREW, HEXAGON HEAD: 5/8-11 UNC X 2 IN. LG MS90725-164 (96906)		EA	2	*	*	*	*	1	8
P O		WASHER, FLAT: FOR 5/8 IN. BOLT AN960-1016 (88044)		EA	4	*	*	*	*	1	9
X20		BOX, STORAGE: WITHOUT TRAYS 2001000362 (33469)		EA	1					2	1
P O	5310-763-8920	NUT, HEXAGON, FLAIN PLATED: 5/8-11 UNC MS51967-20 (96906)		EA	4	*	*	*	*	2	2
P O		WASHER, HELICAL SPRING LOCK: FOR 5/8 IN. BOLT MS35338-50 (96906)		EA	4	*	*	*	*	2	3
P O		WASHER, BEVEL: FOR 5/8 IN. BOLT 9157340-5 (39428)		EA	2	*	*	*	*	2	4
P O	5305-724-5914	CAP SCREW, HEXAGON HEAD: 5/8-11 UNC X 3 IN. LG MS90725-168 (96906)		EA	2	*	*	*	*	2	5
P O	5305-051-0827	CAP SCREW, HEXAGON HEAD: 5/8-11 UNC X 2 IN. LG MS90725-164 (96906)		EA	2	*	*	*	*	2	6
P O		WASHER, FLAT: FOR 5/8 IN. BOLT AN960-1016 (88044)		EA	4	*	*	*	*	2	7
X20		RAIL, GUARD ASSEMBLY 20018005 (33469)		EA	1					3	1
P O		SNAP END BOLT 3901119 (39428)		EA	2	*	*	*	*	3	2
P O		EYE BOLT: 1/4 IN. BOLT DIA, 2 IN. SHANK, W/1/2 IN. ID 9414K19 (39428)		EA	2	*	*	*	*	3	3
P O		CHAIN: STAINLESS STEEL, SIZE 3 3616T14 (39428)		FT	16	*	*	*	*	3	4
P O		STANCHION, END 20018005-1 (33469)		EA	2	*	*	*	*	3	5
P O		STANCHION, INTERMEDIATE 20018005-2 (33469)		EA	6	*	*	*	*	3	6
P O		SLING: BRIDLE, FOUR LEG 20010007-1 (33469)		EA	1	*	*	*	*	4	
P O		SLING: SINGLE, W/HOOK 20010007-2 (33469)		EA	4	*	*	*	*	5	

(1) SMR CODE	(2) FEDERAL STOCK NUMBER	(3) DESCRIPTION F REF NUMBER & MFR CODE	(4) USABLE ON CODE	(5) UNIT OF MEAS QTY INC IN UNIT	(6) 15-DAY ORGANIZATIONAL MAINTENANCE ALW				(7) ILLUS- TRATION	
					(a)	(b)	(c)	(d)	(a)	(b)
					1-5	6-20	21-50	51-100	FIG. NO.	ITEM NO.
P O		BAR, SPREADER 2001B013 (33469)		EA 2	*	*	*	*	6	1
P O	5305-724-5938	CAP SCREW, HEXAGON HEAD: 5/8-11 UNC X 1/4 IN. LG MS90725-172 (96906)		EA 4	*	*	*	*	6	2
P O	5310-820-6653	WASHER, HELICAL SPRING LOCK: FOR 5/8 IN. BOLT MS35338-50 (96906)		EA 4	*	*	*	*	6	3
P O	5310-167-0825	WASHER, FLAT: FOR 5/8 IN. BOLT AN960-1016 (88044)		EA 4	*	*	*	*	6	4
P O		SPACE: SPREADER BAR, HOLD-DOWN 2001B009 (33469)		EA 4	*	*	*	*	6	5
P O		LADDER: ACCESS 20010004 (33469)		EA 1	*	*	*	*	7	1
P O	5305-051-0827	CAP SCREW, HEXAGON HEAD: 5/8-11 UNC X 2 IN. LG MS90725-164 (96906)		EA 2	*	*	*	*	7	2
P O	5305-724-5914	CAP SCREW, HEXAGON HEAD: 5/8-11 UNC X 3 IN. LG MS90725-168 (96906)		EA 2	*	*	*	*	7	3
P O	5310-820-6653	WASHER, HELICAL SPRING LOCK: FOR 5/8 IN. BOLT MS35338-50 (96906)		EA 4	*	*	*	*	7	4
P O	5310-167-0825	WASHER, FLAT: FOR 5/8 IN. BOLT AN960-1016 (88044)		EA 4	*	*	*	*	7	5
P O		STRAP: HOLD-DOWN 2001B006-2 (33469)		EA 1	*	*	*	*	7	6
P O		STRAP: HOLD-DOWN 2001B006-1 (33469)		EA 1	*	*	*	*	7	7
P O	5975-296-0621	ROD, GROUND: .75 DIA, COPPER CLAD STEEL, 10 FT LG 7510 (81790)		EA 2	*	*	*	*	8	1
P O	5305-727-3804	CAP SCREW, HEXAGON HEAD: 5/8-11 UNC X 2 1/2 IN. LG MS90725-155 (96906)		EA 3	*	*	*	*	8	2
P O	5310-820-6653	WASHER, HELICAL SPRING LOCK: FOR 5/8 IN. BOLT MS35338-50 (96906)		EA 3	*	*	*	*	8	3
P O	5310-167-0825	WASHER, FLAT: FOR 5/8 IN. BOLT AN960-1016 (88044)		EA 3	*	*	*	*	8	4
P O		CLAMP: GROUND ROD, HOLD-DOWN 2001B008 (33469)		EA 3	*	*	*	*	8	5
P O		CLAMP: HOT LINE, SIZE 0 1BS (81790)		EA 1	*	*	*	*	9	
P O	7220-753-2982	MAT: SWITCH GEAR, HIGH VOLTAGE, 2 FT WIDE, 1/4 IN. THK, 16 FT LG 410C1 (71348)		EA 1	*	*	*	*		
P O	6145-939-4952	CABLE, COPPER: STRAIGHT BARE 2/0 207-92466-1 (24457)		FT 50	*	*	*	*		
		GROUP 02 - HIGH VOLTAGE SECTION								
X20		DOOR: UPPER FRONT 109D191469 (03497)		EA 1					11	1
P O	5305-269-3217	CAP SCREW, HEXAGON HEAD: 3/8-16 UNC X 2 1/4 IN. LG MS90725-67 (96906)		EA 4	*	*	*	*	11	2
P O		WASHER, HELICAL SPRING LOCK: FOR 3/8 IN. BOLT MS35338-46 (96906)		EA 4	*	*	*	*	11	3
P O	5310-167-0821	WASHER, FLAT: FOR 3/8 IN. BOLT AN960-616 (88044)		EA 4	*	*	*	*	11	4
X20		GLASS WINDOW 127A6410P1 (03497)		EA 2					11	5

(1) SMR CODE	(2) FEDERAL STOCK NUMBER	(3) DESCRIPTION	(4) USABLE ON CODE	(5) UNIT OF MEAS IN UNIT	(6) 15-DAY ORGANIZATIONAL MAINTENANCE ALW				(7) ILLUS- TRATION		
					(a)	(b)	(c)	(d)	(a)	(b)	
					1-5	6-20	21-50	51-100	FIG. NO.	ITEM NO.	
X20		PLATE: OPERATING HANDLE 931D0100-180-03 (03497)		EA	2					11	6
P20		HINGE: DOOR, UPPER FRONT 0931D0100-037-54 (03497)		EA	2	*	*	*	*	11	7
X20		DOOR: LOWER FRONT 931D0100-037015 (03497)		EA	1					11	8
P O	5305-269-3217	CAP SCREW, HEXAGON HEAD: 3/8-16 UNC X 2 1/4 IN. LG MS90725-67 (96906)		EA	3	*	*	*	*	11	9
P O		WASHER, HELICAL SPRING LOCK: FOR 3/8 IN. BOLT MS35338-46 (96906)		EA	3	*	*	*	*	11	10
P O	5310-167-0821	WASHER, FLAT: FOR 3/8 IN. BOLT AN960-616 (88044)		EA	3	*	*	*	*	11	11
P20		HINGE: DOOR, LOWER FRONT 0931D0100-037-54 (03497)		EA	2	*	*	*	*	11	
X20		PANEL: ACCESS, LOWER REAR 931D0100-032-34 (03497)		EA	1					11	12
P O	5305-269-3217	CAP SCREW, HEXAGON HEAD: 3/8-16 UNC X 2 1/4 IN. LG MS90725-67 (96906)		EA	6	*	*	*	*	11	13
P O	5310-637-9541	WASHER, HELICAL SPRING LOCK: FOR 3/8 IN. BOLT MS35338-46 (96906)		EA	6	*	*	*	*	11	14
P O	5310-167-0821	WASHER, FLAT: FOR 3/8 IN. BOLT AN960-616 (88044)		EA	6	*	*	*	*	11	15
X20		PANEL: ACCESS, UPPER REAR 109D1914P60 (03497)		EA	1					11	16
P O	5305-269-3217	CAP SCREW, HEXAGON HEAD: 3/8-16 UNC X 2 1/4 IN. LG MS90725-67 (96906)		EA	6	*	*	*	*	11	17
P O	5310-637-9541	WASHER, HELICAL SPRING LOCK: FOR 3/8 IN. BOLT MS35338-46 (96906)		EA	6	*	*	*	*	11	18
P O	5310-167-0821	WASHER, FLAT: FOR 3/8 IN. BOLT AN960-616 (88044)		EA	6	*	*	*	*	11	19
P O		GASKET: DOOR RUBBER, 12 FT LG 6552986P2 (03497)		EA	4	*	*	*	*	11	20
P O		FILTER, AIR 2001-001P67 (33469)		EA	4	*	*	*	*	11	21
P O	5310-250-9477	NUT, HEXAGON: STAINLESS STEEL, 1/4-20 UNC MS35649-2254 (96906)		EA	4	*	*	*	*	11	22
P O	5310-883-9417	WASHER, HELICAL SPRING LOCK: FOR 1/4 IN. BOLT MS35338-158 (96906)		EA	4	*	*	*	*	11	23
P O		COVER: AIR FILTER 10B000274 (33469)		EA	4	*	*	*	*	11	24
P20		CONNECTOR: TERM, FOR 250 MM WIRE LSN025NE (74159)		EA	6	*	*	*	*	12	1
P20		CONNECTOR: TERM, FOR 1/0 WIRE LSN2/ONE (74159)		EA	3	*	*	*	*	12	2
P20		BLOCK: TERMINAL, 6 POSITION 6422482G206 (03497)		EA	1	*	*	*	*	13	1
P O		HEATER STRIP ASSEMBLY 4DB46C20 (03497)		EA	1	*	*	*	*	13	2
X20		PANEL: SIDE TRANSITION 931D0100-091-45 (03497)		EA	2					14	1
P O		SCREW, WASHER, HEXAGON HEAD 2001E001P82 (33469)		EA	18	*	*	*	*	14	2

(1) SMR CODE	(2) FEDERAL STOCK NUMBER	(3) DESCRIPTION REF NUMBER & MFR CODE	(4) USABLE OR CODE	(5) UNIT OF MEAS	(6) QTY INC IN UNIT	(6) 15-DAY ORGANIZATIONAL MAINTENANCE ALW				(7) ILLUS- TRATION	
						(a)	(b)	(c)	(d)	(a)	(b)
						1-5	6-20	21-50	51-100	FIG. NO.	ITEM NO.
P O	5310-732-0558	NUT, HEXAGON, PLAIN: 3/8-16 UNC MS51967-8 (96906)		EA	15	*	*	*	*	14	3
P O	5310-637-9541	WASHER, HELICAL SPRING LOCK: FOR 3/8 IN. BOLT MS35338-46 (96906)		EA	15	*	*	*	*	14	4
P O	5310-167-0821	WASHER, FLAT: FOR 3/8 IN. BOLT AN960-616 (88044)		EA	15	*	*	*	*	14	5
P O	5305-269-3213	CAP SCREW, HEXAGON HEAD: 3/8-16 UNC X 2 1/4 IN. LG MS90725-62 (96906)		EA	15	*	*	*	*	14	6
P O	5310-167-0821	WASHER, FLAT: FOR 3/8 IN. BOLT AN960-616 (88044)		EA	15	*	*	*	*	14	7
P O		GASKET: 1/4 X 5/8 X 190 IN. A12C12B5 (08931)		EA	1	*	*	*	*	14	8
P20		HANDLE: OPERATING AIR BREAK SWITCH 105C9369G3 (03497)		EA	1	*	*	*	*		
		GROUP 03 - TRANSFORMER									
P O		VALVE, DRAIN: 1 IN. NPT 2001E001P67 (33469)		EA	1	*	*	*	*	16	1
P O		VALVE, SAMPLER: 1/4 NPT 2001E001P68 (33469)		EA	1	*	*	*	*	16	2
P O		GAGE: PRESSURE VACUUM DAL0343P (91415)		EA	1	*	*	*	*	17	
P O		INDICATOR: OIL TEMPERATURE 150-40-12E (91415)		EA	1	*	*	*	*	18	
P O		INDICATOR: WINDING TEMPERATURE 150-50-12G (91415)		EA	1	*	*	*	*	19	
P O		GAGE: LIQUID LEVEL 1-30-122 (91415)		EA	1	*	*	*	*	20	1
P O	5310-732-0558	NUT, HEXAGON, PLAIN: 3/8-16 UNC MS51967-8 (96906)		EA	4	*	*	*	*	20	2
P O	5310-637-9541	WASHER, HELICAL SPRING LOCK: FOR 3/8 IN. BOLT MS35338-46 (96906)		EA	4	*	*	*	*	20	3
P O	5310-167-0828	WASHER, FLAT: FOR 3/8 IN. BOLT AN960-616 (88044)		EA	4	*	*	*	*	20	4
P O		VALVE: PRESSURE RELIEF, 1/4 NPT 2001E001P69 (33469)		EA	1	*	*	*	*	21	
P O		PIPE: OIL FILL, W/FLANGE 2001E001P84 (33469)		EA	1	*	*	*	*	22	1
P O		CAP, PIPE: 1 IN. GALVANIZED 2001E001P85 (33469)		EA	1	*	*	*	*	22	2
P O	5310-732-0558	NUT, HEXAGON, PLAIN: 3/8-16 UNC MS51967-8 (96906)		EA	4	*	*	*	*	22	3
P O	5310-637-9541	WASHER, HELICAL SPRING LOCK: FOR 3/8 IN. BOLT MS35338-46 (96906)		EA	4	*	*	*	*	22	4
P O	5310-167-0828	WASHER, FLAT: FOR 3/8 IN. BOLT AN960-616 (88044)		EA	4	*	*	*	*	22	5
X20		COVER: HAND HOLE 744A208MDG4 (08931)		EA	2					23	1
P O	5310-732-0358	NUT, HEXAGON, PLAIN: 3/8-16 UNC MS51967-8 (96906)		EA	24	*	*	*	*	23	2
P O	5310-637-9541	WASHER, HELICAL SPRING LOCK: FOR 3/8 IN. BOLT MS35338-46 (96906)		EA	24	*	*	*	*	23	3
P O	5310-167-0828	WASHER, FLAT: FOR 3/8 IN. BOLT AN960-616 (88044)		EA	24	*	*	*	*	23	4

(1) SMR CODE	FEDERAL STOCK NUMBER	(3) DESCRIPTION REF NUMBER & MFR CODE	(4) USABLE ON CODE	(5) UNIT OF MEAS	(6) QTY INC IN UNIT	(6) 15-DAY ORGANIZATIONAL MAINTENANCE ALW				(7) ILLUS- TRATION	
						(a)	(b)	(c)	(d)	(a)	(b)
						1-5	6-20	21-50	51-100	FIG. NO.	ITEM NO.
P O		GASKET: HAND HOLE COVER 112A2621J0P1550 (08931)		EA	2	*	*	*	*	23	5
		GROUP 04 - LOW VOLTAGE SECTION									
P O	5310-732-0558	NUT, HEXAGON, PLAIN: 3/8-11 UNC MS51967-8 (96906)		EA	13	*	*	*	*	25	1
P O	5310-637-9541	WASHER, HELICAL SPRING LOCK: FOR 3/8 IN. BOLT MS35338-46 (96906)		EA	13	*	*	*	*	25	2
P O	5305-269-3213	CAP SCREW, HEXAGON HEAD: 3/8-11 UNC X 1 1/4 IN. LG MS90725-62 (96906)		EA	13	*	*	*	*	25	3
P O	5310-167-0828	WASHER, FLAT: FOR 3/8 IN. BOLT AN960-616 (88044)		EA	13	*	*	*	*	25	4
P O		GASKET: 1/4 X 5/8 X 1 1/2 IN. A12C12B5 (08931)		EA	1	*	*	*	*	25	5
P20		PLATE: SWITCH TOGGLE 93071 (41326)		EA	2	*	*	*	*	26	1
P O		SWITCH TOGGLE, 115V W/SCREWS WS896 (81348)		EA	2	*	*	*	*	26	2
P20		PLATE: RECEPTACLE, DUPLEX, W/SCREWS 93101 (41326)		EA	1	*	*	*	*	26	3
P O	5935-283-4003	OUTLET: RECEPTACLE, DUPLEX, W/SCREWS WC00596D7 (81348)		EA	1	*	*	*	*	26	4
P O		LAMP: INCANDESCENT, 60W, 115V GE (03497)		EA	4	*	*	*	*	27	1
P O		HOLDER: LAMP, W/MTG SCREWS GE5625-3 (03497)		EA	4	*	*	*	*	27	2
P20		HOLDER: FUSE, 30A, 600V, 3 POLE 067300500SH210G2 (03497)		EA	1	*	*	*	*	28	1
P O		FUSE: CARTRIDGE, 6A, 600V GF886 (03497)		EA	2	*	*	*	*	28	2
P20		HOLDER: FUSE, 30A, 600V, 2 POLE 067300500SH210G1 (03497)		EA	1	*	*	*	*	29	1
P O	5920-728-8413	FUSE: CARTRIDGE, 20A, 600V GF8820 (03497)		EA	1	*	*	*	*	29	2
P O		FILTER: AIR 2001E001P67 (33469)		EA	8	*	*	*	*	30	1
P O	5310-250-9477	NUT, HEXAGON: STAINLESS STEEL, 1/4-20 UNC MS35649-416 (96906)		EA	4	*	*	*	*	30	2
P O	5310-883-9417	WASHER, HELICAL SPRING LOCK: FOR 1/4 IN. BOLT MS35338-158 (96906)		EA	4	*	*	*	*	30	3
P O		COVER 108000247 (33469)		EA	1	*	*	*	*	30	4
P20		LOCK: TERMINAL, 4 POSITION 6422482G204 (03497)		EA	1	*	*	*	*	31	1
P O		SCREW, PAN HEAD: NO. 10-32 X 1/2 IN. LG MS35224-63 (96906)		EA	2	*	*	*	*	31	2
P20		LOCK: TERMINAL, 6 POSITION 6422482G206 (03497)		EA	2	*	*	*	*	32	1
P O		SCREW, PAN HEAD: NO. 10-32 X 1/2 IN. LG MS35224-63 (96906)		EA	2	*	*	*	*	32	2
P20	5940-178-0207	LOCK: TERMINAL, 12 POSITION 6422482G12 (03497)		EA	1	*	*	*	*	33	1
P O		SCREW, PAN HEAD: NO. 10-32 X 1/2 IN. LG MS35224-63 (96906)		EA	2	*	*	*	*	33	2

(1) SMR CODE	(3) DESCRIPTION REF NUMBER & MFR CODE	(4) USABLE ON CODE	(5) UNIT OF MEAS QTY INC IN UNIT	(6) 15-DAY ORGANIZATIONAL MAINTENANCE ALW				(7) ILLUS- TRATION		
				(a)	(b)	(c)	(d)	(a)	(b)	
				1-5	6-20	21-50	51-100	FIG. NO.	ITEM NO.	
P O	HEATER, STRIP 2A817A701 (03497)		EA	2	*	*	*	*	34	1
P O	NUT, HEXAGON, PLAIN: 1/4-20 UNC MS51967-2 (96906)		EA	2	*	*	*	*	34	2
P O	WASHER, HELICAL SPRING LOCK: FOR 1/4 IN. BOLT MS35338-158 (96906)		EA	2	*	*	*	*	34	3
P O	CAP, SCREW, HEXAGON HEAD: 1/4-20 UNC X 3/4 IN. LG MS90725-6 (96906)		EA	2	*	*	*	*	34	4
P O	WASHER, FLAT: FOR 1/4 IN. BOLT AM960- (88044)		EA	2	*	*	*	*	34	5
P O	CORDE ELECTRICAL EXTENSION, 115V, 3 COND, NO. 12, 50 FT LG 20018015 (33469)		EA	1	*	*	*	*	35	1
P O	CONNECTOR WIRE, SIZE 12 AWG 10R08FX (59730)		EA	3	*	*	*	*	35	2
P O	CAP: ARMORED 5364 (74545)		EA	1	*	*	*	*	35	3
P O	CABLE: 3 COND, 12 AWG, TYPE 90 51-53116 (08931)		FT	50	*	*	*	*	35	4
X20	PANEL: ACCESS TRANSITION 109D7908P55 (03497)		EA	1					36	1
P O	5305-269-3211 CAP, SCREW, HEXAGON HEAD: 3/8-16 UNC X 1 1/4 IN. LG MS90725-60 (96906)		EA	24	*	*	*	*	36	2
P O	5310-637-9541 WASHER, HELICAL SPRING LOCK: FOR 3/8 IN. BOLT MS35338-46 (96906)		EA	24	*	*	*	*	36	3
P O	5310-167-0821 WASHER, FLAT: FOR 3/8 IN. BOLT AM960-616 (88044)		EA	24	*	*	*	*	36	4
P O	GASKET: 1/4 X 5/8 X 190 IN. A12C12B5 (08931)		EA	1	*	*	*	*	36	5
P20	LUG: TERMINAL, 2 BARRFL, 500 MOM VL2-21785 (03497)		EA	1	*	*	*	*	37	1
X20	DOOR ASSEMBLY: LOW VOLTAGE SWITCH GEAR 245C236G3 (03497)		EA	4						
P20	HINGE: DOOR, LOW VOLTAGE 093100100-037-54 (03497)		EA	2	*	*	*	*		
P O	HANDLE: DOOR LATCH ASSEMBLY 109D5298P77 (03497)		EA	1	*	*	*	*		
X20	ROD, LATCHING: 7/8 IN. DOOR, LOW VOLTAGE 245C236P11 (03497)		EA	1						
P O	GASKET: DOOR RUBBER 6552986P2 (03497)		FT	18	*	*	*	*		
X20	DOOR: INSTRUMENT, VOLTMETER AND SELECTOR SWITCH 0224A9766U101A (03497)		EA	1						
P O	5930-672-7708 SWITCH: TRANSFER VOLTMETER, 7 POSITION 16SBI CF16X2 (03497)		EA	1	*	*	*	*		
P O	VOLTMETER: AB40, 600V SCALE, 250V 50-103-021RSSJ (29834)		EA	1	*	*	*	*		
X20	DOOR: INSTRUMENT, AMMETERS AND SELECTOR SWITCHES 0224A9766U102A (03497)		EA	1						
P O	5930-994-4221 SWITCH: TRANSFER AMMETER, 4 POSITION 16SBI CA19X2 (03497)		EA	3	*	*	*	*		

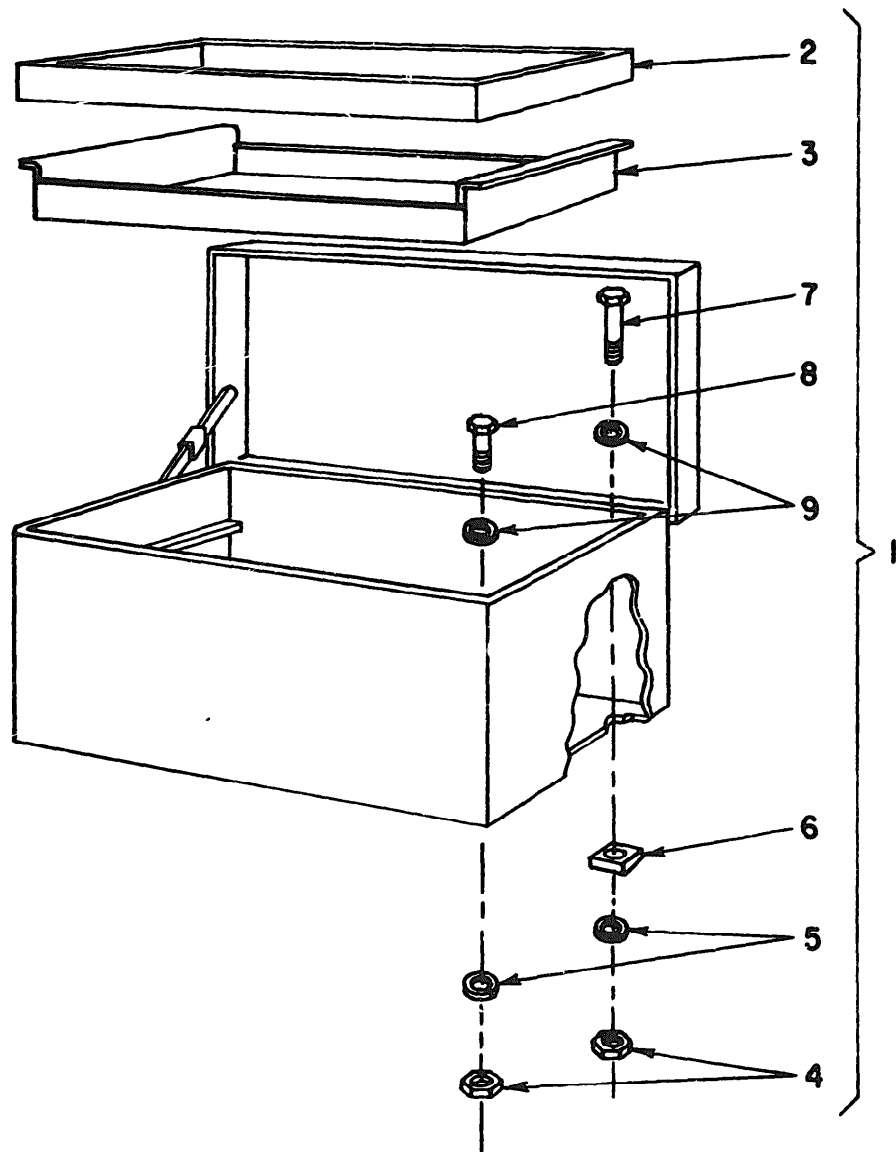
(1) SMR CODE	(2) FEDERAL STOCK NUMBER	(3) DESCRIPTION REF NUMBER & MFR CODE	(4) USABLE ON CODE	(5) UNIT OF MEAS IN UNIT	(6) 15-DAY ORGANIZATIONAL MAINTENANCE ALLOW				(7) ILLUS- TRATION		
					(a)	(b)	(c)	(d)	(a)	(b)	
					1-5	6-20	21-50	51-100	PIC. NO.	ITEM NO.	
P O		AMMETER: AD40, 600-5 AMP 50-103-131LSSJ (29834)		EA	3	*	*	*	*		
		GROUP 05 - CABLE REELS									
P O		LOCKING ASSEMBLY: CABLE REEL 2001002G2-20 (33469)		EA	1	*	*	*	*	38	1
P O	5315-194-2455	PIN: HITCH AN415-2 (88044)		EA	1	*	*	*	*	38	2
P O		BAR: LOCKING 2001002P14 (33469)		EA	1	*	*	*	*	38	3
P O	5310-250-9477	NUT, HEXAGON: STAINLESS STEEL, 1/4-20 UNC MS35649-2254 (96906)		EA	2	*	*	*	*	38	4
P O	5310-883-9417	WASHER, HELICAL SPRING LOCK: FOR 1/4 IN. BOLT MS35338-158 (96906)		EA	2	*	*	*	*	38	5
P O		EYE BOLT: 1/2 IN. ID, 1 IN. SHANK, 1/4-20 UNC 9414K19 (39428)		EA	2	*	*	*	*	38	6
P O		CHAIN: STAINLESS, SIZE 3 3616T14 (39428)		FT	10	*	*	*	*	38	7
X20		REEL: CABLE ASSEMBLY 2001002 (33469)		EA	2					39	1
P O	5310-763-8920	NUT, HEXAGON, PLAIN: 5/8-11 UNC MS51967-20 (96906)		EA	8	*	*	*	*	39	2
P O	5310-820-6653	WASHER, HELICAL SPRING LOCK: FOR 5/8 IN. BOLT MS35338-50 (96906)		EA	8	*	*	*	*	39	3
P O	5310-167-0825	WASHER, FLAT: FOR 5/8 IN. BOLT AN960-1016 (88044)		EA	8	*	*	*	*	39	4
P O	5305-724-5914	CAP SCREW, HEXAGON HEAD: 5/8-11 UNC X 3 IN. LG MS90725-168 (96906)		EA	8	*	*	*	*	39	5
P O	5310-167-0825	WASHER, FLAT: FOR 5/8 IN. BOLT AN960-1016 (88044)		EA	8	*	*	*	*	39	6
P O		COLLAR: SHAFT 32L (28623)		EA	2	*	*	*	*	39	7
P O		BLOCK: PILLW 06886-11H (71041)		EA	4	*	*	*	*	39	8
P O		PIN: ROLL SPRING MS9047-368 (96906)		EA	2	*	*	*	*	39	9
P O		SHAFT: CABLE REEL 2001B001 (33469)		EA	2	*	*	*	*	39	10
X20		REEL: CABLE STEEL C196-4131 (02120)		EA	2					39	11
X20		STAND: CABLE REEL, OUTER 2001002P3 (33469)		EA	2					40	1
P O	5310-763-8920	NUT, HEXAGON, PLAIN: 5/8-11 UNC MS51967-20 (96906)		EA	8	*	*	*	*	40	2
P O	5310-820-6653	WASHER, HELICAL SPRING LOCK: FOR 5/8 IN. BOLT MS35338-50 (96906)		EA	8	*	*	*	*	40	3
P O	5310-167-0825	WASHER, FLAT: FOR 5/8 IN. BOLT AN960-1016 (88044)		EA	8	*	*	*	*	40	4
P O	5305-724-5936	CAP SCREW, HEXAGON HEAD: 5/8-11 UNC X 3 1/8 IN. LG MS90725-170 (96906)		EA	8	*	*	*	*	40	5

SMF COD	(2) FEDERAL STOCK NUMBER	(3) DESCRIPTION	(4) USABLE ON CODE	(5) UNIT OF MEAS IN UNIT	(6) 15-DAY ORGANIZATIONAL MAINTENANCE ALW				(7) ILLUS- TRATION		
					(a)	(b)	(c)	(d)	(e)	(f)	
					1-5	6-20	21-50	51-100	1-5	6-20	
P O	5310-167-0825	WASHER, FLAT: FOR 5/8 IN. BOLT AN960-1016 (88044)		EA	8	*	*	*	*	40	6
X20		STAND: CABLE REEL, CENTER 2001C002P4 (33469)		EA	1					40	7
P O	5310-753-8920	NUT, HEXAGON, FLAIN: 5/8-11 UNC MS51967-20 (96906)		EA	8	*	*	*	*	40	8
P O	5310-820-6653	WASHER, HELICAL, SPRING LOCK: FOR 5/8 IN. BOLT MS35338-50 (96906)		EA	8	*	*	*	*	40	9
P O	5310-167-0825	WASHER, FLAT: FOR 5/8 IN. BOLT AN960-1016 (88044)		EA	8	*	*	*	*	40	10
P O	5305-724-5914	CAP SCREW, HEXAGON HEAD: 5/8-11 UNC X 3 IN. LG MS90725-168 (96906)		EA	8	*	*	*	*	40	11
P O	5310-167-0825	WASHER, FLAT: FOR 5/8 IN. BOLT AN960-1016 (88044)		EA	8	*	*	*	*	40	12
P O		CABLE: ELECTRIC, 5KVA, 4 CONDUCTOR 207-92360 (24457)		FT	50	*	*	*	*		
P O		CABLE: ELECTRIC, 600V, 500MM, 1 CONDUCTOR 207-92406-1 (24457)		FT	50	*	*	*	*		
		GROUP 06 - SEMITRAILER									
X20		MUD FLAP ASSEMBLY 102954 (78680)		EA	1					41	4
P O	5310-761-6882	NUT, HEXAGON, FLAIN: 1/4-20 UNC MS51967-2 (96906)		EA	8	*	*	*	*	41	5
P O	5310-883-9417	WASHER, HELICAL, SPRING LOCK: FOR 1/4 IN. BOLT MS35338-158 (96906)		EA	8	*	*	*	*	41	6
P O	5305-225-3839	CAP. SCREW, HEXAGON HEAD: 1/4-20 UNC X 1 1/2 IN. LG MS90725-8 (96906)		EA	8	*	*	*	*	41	7
P O		MUD FLAP: 24 X 24 100059 (78680)		EA	2	*	*	*	*	41	8
X20		STRAP: MUD FLAP 102951 (78680)		EA	2					41	9
X20		TANK AND VALVE ASSEMBLY 282617 (06853)		EA	1					41	11
P20		TANK: AIR 276222 (06853)		EA	1	*	*	*	*	41	12
P O		VALVE: RE-6 M281865 (06853)		EA	1	*	*	*	*	41	13
P O	4730-069-1187	ELBOW: 90 DEG, 1/4 IN. PIPE TO 3/8 IN. TUBE MS39182-3 (96906)		EA	2	*	*	*	*	41	14
P O	5310-087-4652	NUT, HEXAGON LOCK: 3/8-16 UNC MS51922-17 (96906)		EA	4	*	*	*	*	41	15
P O	5310-167-0821	WASHER, FLAT: FOR 3/8 IN. BOLT AN960-616 (88044)		EA	4	*	*	*	*	41	16
P O	5305-269-3211	CAP. SCREW, HEXAGON HEAD: 3/8-16 UNC X 1 IN. LG MS90725-60 (96906)		EA	4	*	*	*	*	41	17
P O		SEPARATOR: HOSE 1507 (98343)		EA	3	*	*	*	*	41	18

(1) SAR CODE	(2) FEDERAL STOCK NUMBER	(3) DESCRIPTION	(4) UNIT OF MEAS USABLE ON CODE	(5) QTY INC IN UNIT	(6) 15-DAY ORGANIZATIONAL MAINTENANCE ALW				(7) ILLUS- TRATION	
					(a)	(b)	(c)	(d)	(a)	(b)
					1-5	6-20	21-50	51-100	FIG. NO.	ITEM NO.
P O		HOSE: AIR, 3/8 X 24 IN. LG 103011 (78680)	EA	2	*	*	*	*	41	20
P O		HOSE: AIR, 3/8 X 24 IN. LG, W/FITTINGS 100159 (78680)	EA	2	*	*	*	*	41	21
P O		HOSE: AIR, 3/8 X 60 IN. LG, W/FITTINGS 100158 (78680)	EA	2	*	*	*	*	41	22
P O	4730-595-0083	AIR: HAND 275150 (06855)	EA	2	*	*	*	*	41	23
X20		WHEEL ASSEMBLY 67209711 (18889)	EA	8					41	24
P O		RIM: 5:00 X 20 9:00X20 (52065)	EA	4	*	*	*	*	41	25
P20	2530-124-5747	SPACER: WHEEL, 1/2 IN. SB020K (73842)	EA	4	*	*	*	*	41	26
P20		WHEEL 6720 (18889)	EA	4	*	*	*	*	41	27
P O	2610-275-7995	TIRE: 9:00 X 20, 10 PLY TRANSPORT MS35388-17 (96906)	EA	4	*	*	*	*	41	29
P20		BOX: CONVERSION, 12-24 VOLT ASSEMBLY 5196M18 (98343)	EA	1	*	*	*	*	49	1
P O		CONNECTOR: 7 WAY, FEMALE 782ATA (98343)	EA	1	*	*	*	*	49	2
P O		CONNECTOR: 12 WAY, FEMALE 7731428E (98343)	EA	1	*	*	*	*	49	3
P C		CIRCUIT BREAKER: AUTO RESET, 30A 1512-30 (98343)	EA	2	*	*	*	*	49	4
P O		CIRCUIT BREAKER: AUTO RESET, 15A 1512-15 (98343)	EA	4	*	*	*	*	49	5
P O		RESISTOR: R1, 3.5 OHMS, 5W F505 (44655)	EA	1	*	*	*	*	49	
P O		RESISTOR: R2 AND R3, 6.6 OHMS, 5W F507 (44655)	EA	1	*	*	*	*	49	
P O		RESISTORS: R4, R5, R6, R7, 2.5 OHMS, 5W F504 (44655)	EA	1	*	*	*	*	49	
X20		PUMPER ASSEMBLY: REAR 102916 (78680)	EA	1					50	1
P O		NUT, HEXAGON LOCK: 1/2-13 UNC MS51922-33 (96906)	EA	6	*	*	*	*	50	2
P O		WASHER, BEVELED: 5/8 IN. STEEL, FOR 1/2 IN. BOLT 91573A035 (39428)	EA	6	*	*	*	*	50	3
P O	5305-782-9494	CAP SCREW, HEXAGON HEAD: 1/2-13 UNC X 1 3/4 IN. LG MS90725-114 (96906)	EA	6	*	*	*	*	50	4
P O		NUT, HEXAGON LOCK: 1/2-13 UNC MS51922-33 (96906)	EA	12	*	*	*	*	50	5
P O		CAP SCREW, HEXAGON HEAD: 1/2-13 UNC X 1 1/4 IN. LG MS90725-111 (96906)	EA	12	*	*	*	*	50	6

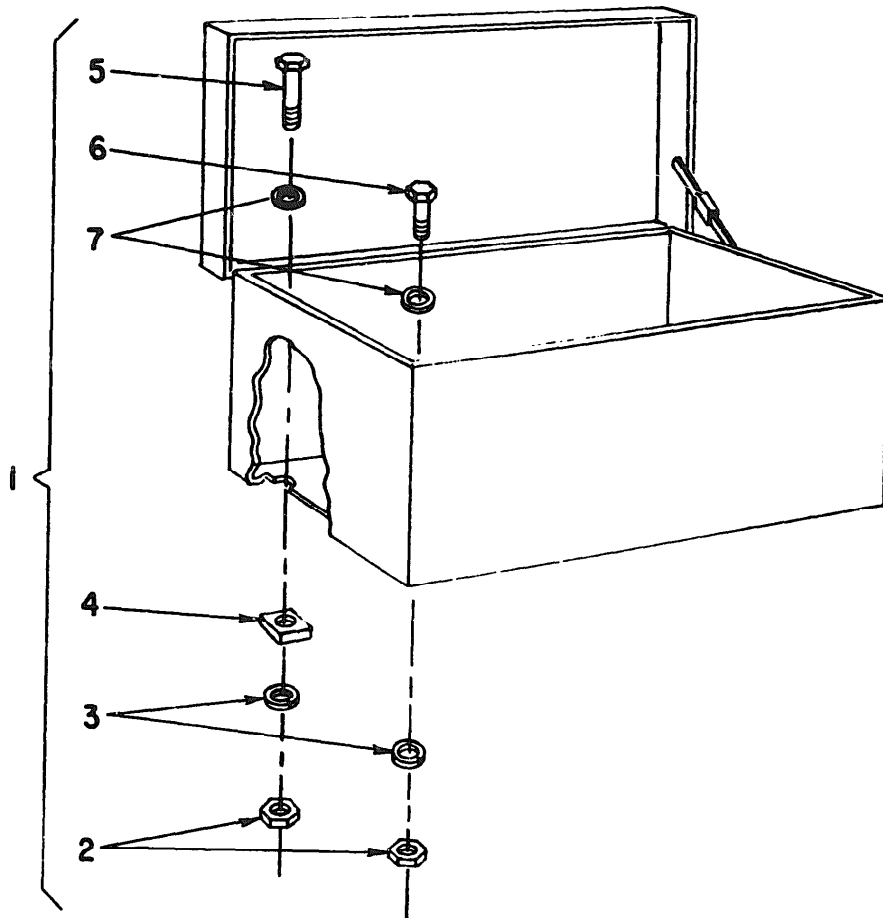
(1) SMR CODE	(2) FEDERAL STOCK NUMBER	(3) DESCRIPTION REF NUMBER & MFR CODE	(4) USABLE ON CODE	(5) UNIT OF MEAS	(6) QTY INC IN UNIT	(8) 15-DAY ORGANIZATIONAL MAINTENANCE ALW				(7) ILLUS- TRATION	
						(a)	(b)	(c)	(d)	(a)	(b)
						1-5	6-20	21-50	51-100	FIG. NO.	ITEM NO.
P O	4730-595-0083	AIR: HAND 275150 (06853)		EA	2	*	*	*	*	51	2
P O		ELBOW, STREET: 1/2 IN., 45 DEG 100155 (78680)		EA	2	*	*	*	*	51	3
P O	4730-069-1186	CONNECTOR, STRAIGHT: 1/4 IN. PIPE TO 3/8 IN. TUBE 205053 (06853)		EA	2	*	*	*	*	51	4
P O	4730-720-5002	NIPPLE: FRAME 205730 (06853)		EA	4	*	*	*	*	51	5
P O		TUBING: 3/8 IN. COPPER HEAD 100165 (78680)		FT	40	*	*	*	*	51	6
P O	4730-069-1186	CONNECTOR, STRAIGHT: 1/4 IN. PIPE TO 3/8 IN. TUBE 205053 (06853)		EA	2	*	*	*	*	51	7
P O		COUPLER: FEMALE, FULL 1/2 IN. 2001A008P50 (33469)		EA	2	*	*	*	*	51	8
P O	4730-720-5002	NIPPLE: FRAME 205730 (06853)		EA	2	*	*	*	*	51	9
P O	6620-299-7425	LIGHT: CLEARANCE MARKER MS35421-1 (96906)		EA	11	*	*	*	*		
P O	6220-055-1184	LENS: AMBER, ACRYLIC 556A (72635)		EA	6	*	*	*	*		
P O	6220-825-1808	LENS: RED, ACRYLIC 556R (72635)		EA	5	*	*	*	*		
P O	5330-931-3012	GASKET: LENS O RING 561 (72635)		EA	11	*	*	*	*		
P O	6220-914-6567	BODY CLEARANCE LIGHT 590 (72635)		EA	11	*	*	*	*		
P O	5330-929-6462	GASKET: RUBBER MTG 602 (72635)		EA	1	*	*	*	*		
P O		LAMP: 2CP, 12 VOLT 1895 (72635)		EA	22	*	*	*	*		
P O	6220-839-7461	LIGHT: TURN STOP, TAIL 141 (72635)		EA	4	*	*	*	*		
P O	6220-300-0284	LENS: RED, ACRYLIC 150R (72635)		EA	4	*	*	*	*		
P O	6220-030-2896	GASKET: LENS 133 (72635)		EA	4	*	*	*	*		
P O		GASKET, MOUNTING 138 (72635)		EA	4	*	*	*	*		
P O		P.TAIL WIRING: W/GROMMET 446DC (72635)		EA	4	*	*	*	*		
P O		LAMP: 2 FILAMENT, 4-32CP, 12 VOLT 1157 (72635)		EA	4	*	*	*	*		
P O		REFLECTOR: AMBER, 3 IN. 218-00-010 (70418)		EA	4	*	*	*	*		
P O		REFLECTOR: RED, 3 IN. 218-00-020 (70418)		EA	4	*	*	*	*		
		GROUP 07 - KITS									
P O		KIT TERMINATION: HIGH VOLTAGE 2001A004 (33469)		EA	1	*	*	*	*		
		3 EA - (ROLLS) TAPE, ELECTRICAL, 23 (20999)									

(1) SMR CODE	(2) FEDERAL STOCK NUMBER	(3) DESCRIPTION REF NUMBER & MFR CODE	(4) USABLE ON CODE	(5) UNIT OF MEAS	(6) QTY INC IN UNIT	(6) 15-DAY ORGANIZATIONAL MAINTENANCE ALW				(7) ILLUS- TRATION		
						(a)	(b)	(c)	(d)	(a)	(b)	
						1-5	6-20	21-50	51-100	FIG. NO.	ITEM NO.	
		2EA-(ROLLS) TAPE, ELECTRICAL, 33 (20999)										
		1 EA - (ROLL) TAPE, ELECTRICAL, 13 (20999)										
		2 EA - (ROLLS) TAPE, ELECTRICAL, 70 (20999)										
		1 EA - (ROLL) PUTTY, ELECTRICAL INSULATION, S/F (20999)										
		1 EA - (CAN) CABLE, PREPARATION CLEANER, 2001A003-5 (33469)										
		4 EA - LUG TERMINATION TL/40 (20999)										
P O		KIT: SPLICE, HIGH VOLTAGE CABLE 2001A003 (33469)		EA	1	*	*	*	*			
		13 EA - (ROLLS) TAPE, ELECTRICAL, 23 (20999)										
		3 EA - (ROLLS) TAPE, ELECTRICAL, 33 (20999)										
		1 EA - (ROLL) TAPE, ELECTRICAL, 13 (20999)										
		3 EA - (ROLLS) PUTTY, ELECTRICAL INSULATION, S/F (20999)										
		1 EA - (CAN) CABLE, PREPARATION CLEANER, 2001A003-5 (33469)										
		1 EA - CONNECTOR, 40 WIRE, 54512 (59730)										
P O		KIT: SPLICE, LOW VOLTAGE CABLE 2001A002 (33469)		EA	1	*	*	*	*			
		1 EA - (ROLL) TAPE INSULATOR, CT500C (59730)										
		1 EA - (ROLL) TAPE, ELECTRICAL HYFLEX, 2001A002-2 (33469)										



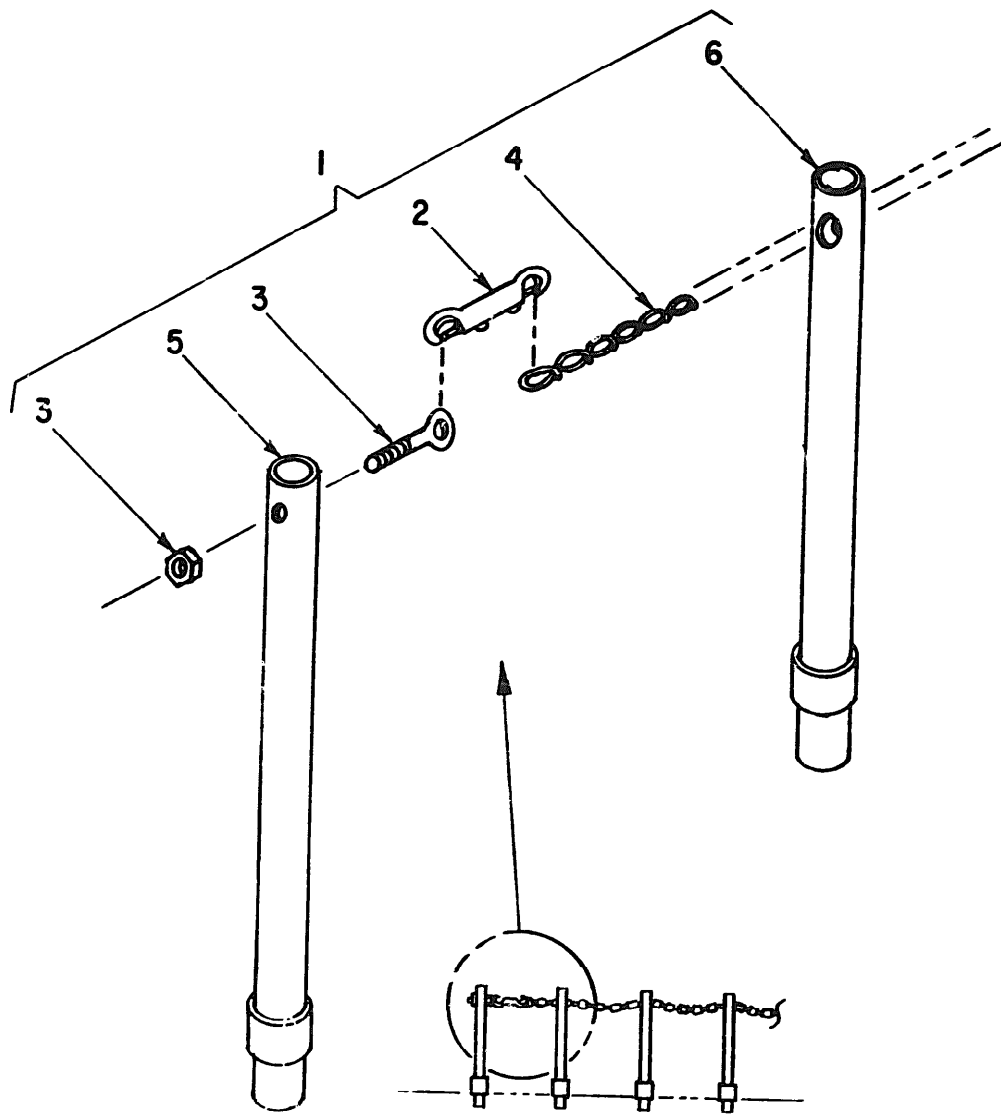
ME 6120-250-34P/1

Figure 1. Box, Stowage With Trays



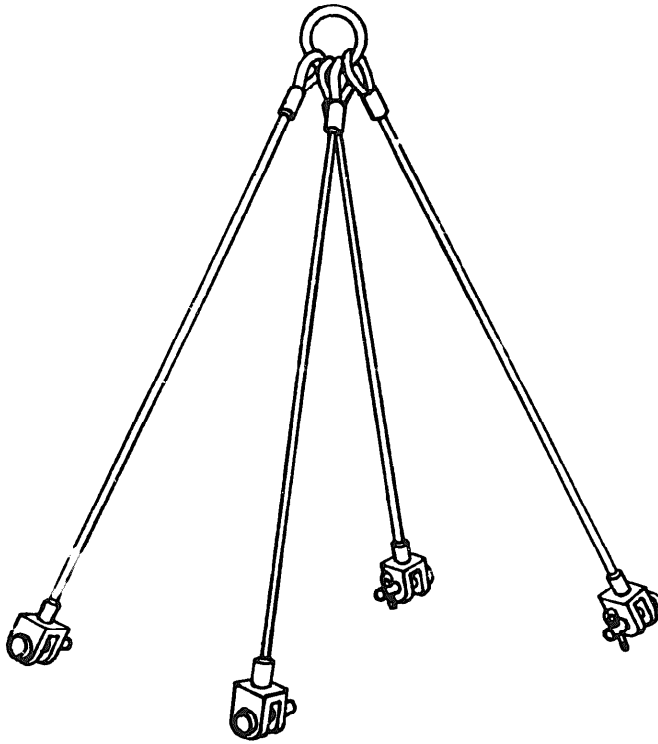
ME 6120-250-34P/2

Figure 2. Box, Stowage Without *Trays*



ME 6120-250-34P/3

Figure 3. Rail, Guard Assembly



ME 6120-250-34P/4

Figure 4. Sling, Bridle Four Leg



Figure 5. Sling, Single With Hook

ME 6120-250-34P/5

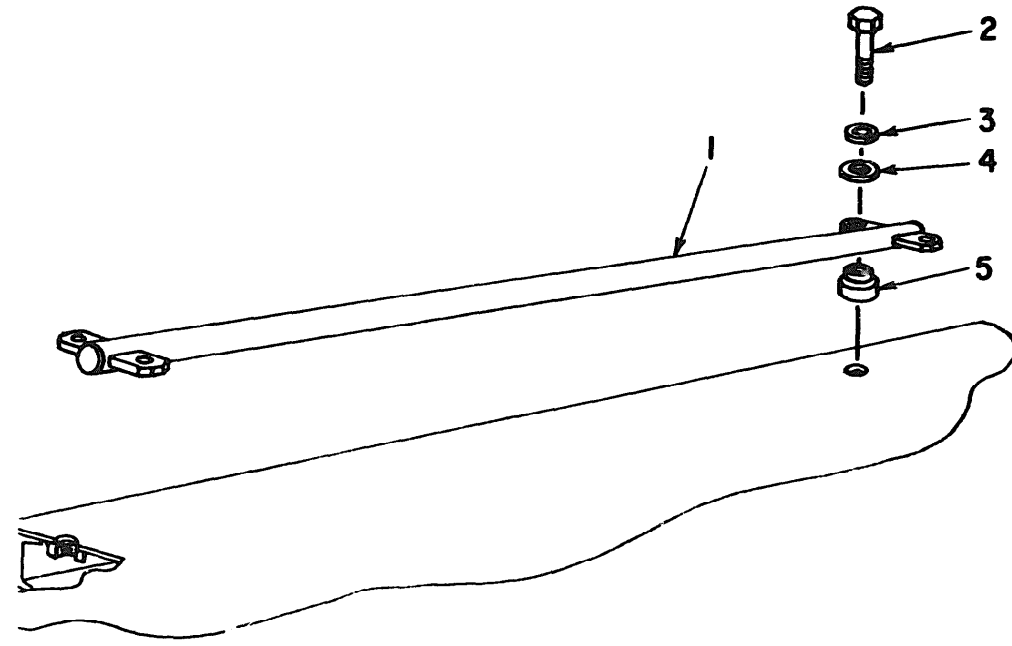


Figure 6. Bar, Spreader

ME6120-250-34P/6

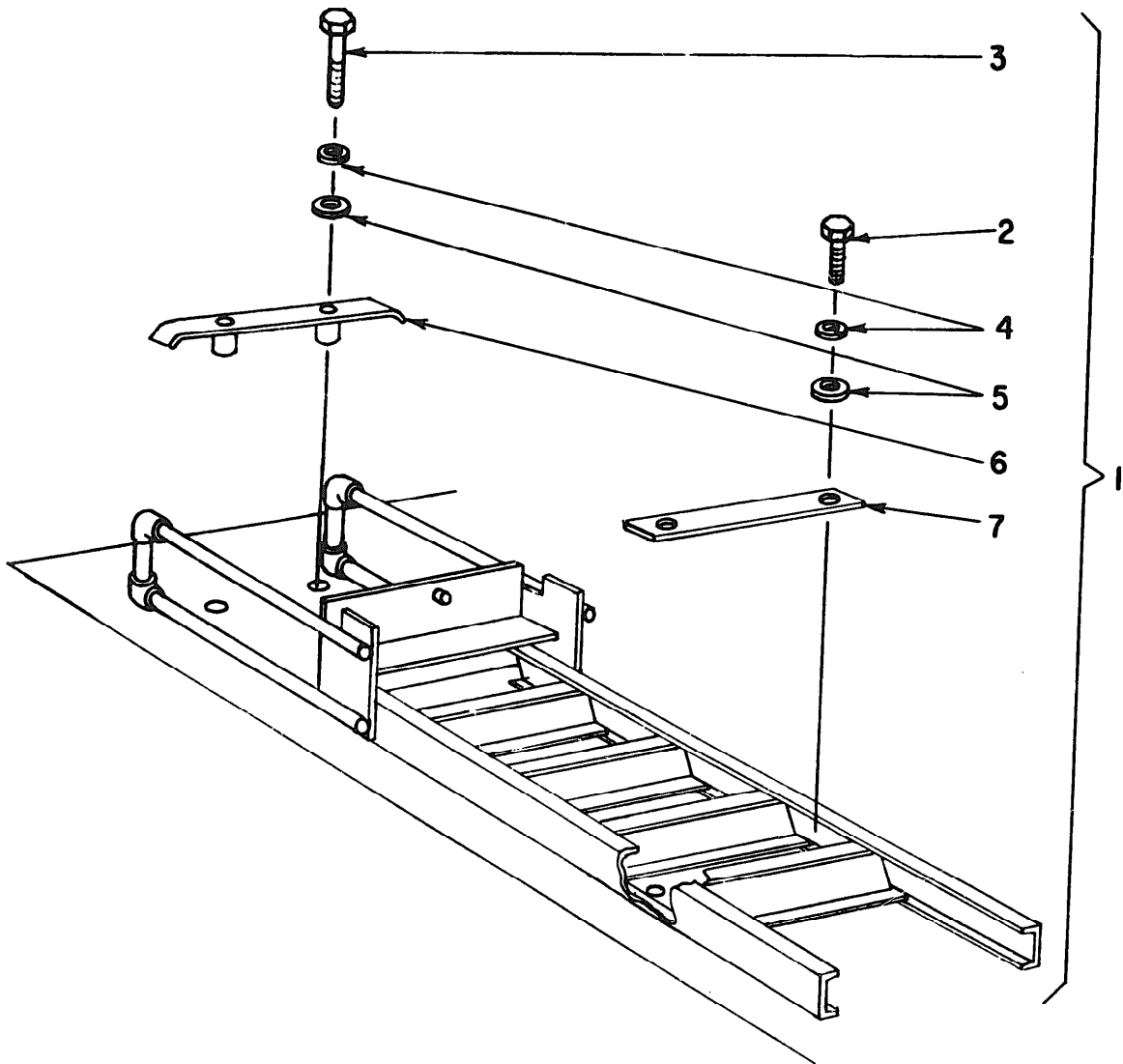
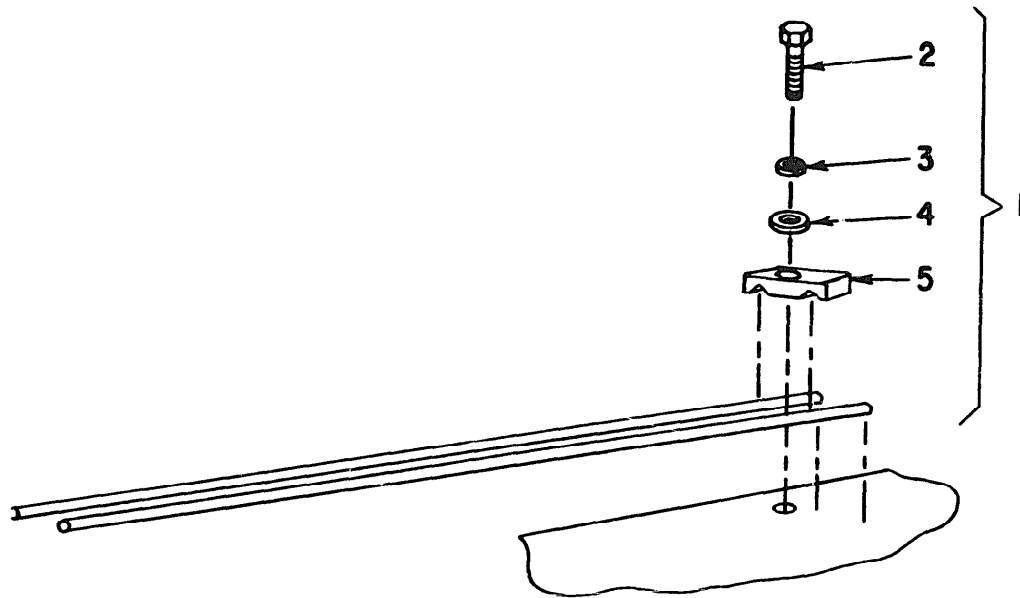


Figure 7. Ladder, Access

ME 6120-250-34P/7



ME 6120-250-34P/8

Figure 8, Rod, Ground

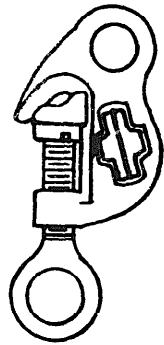
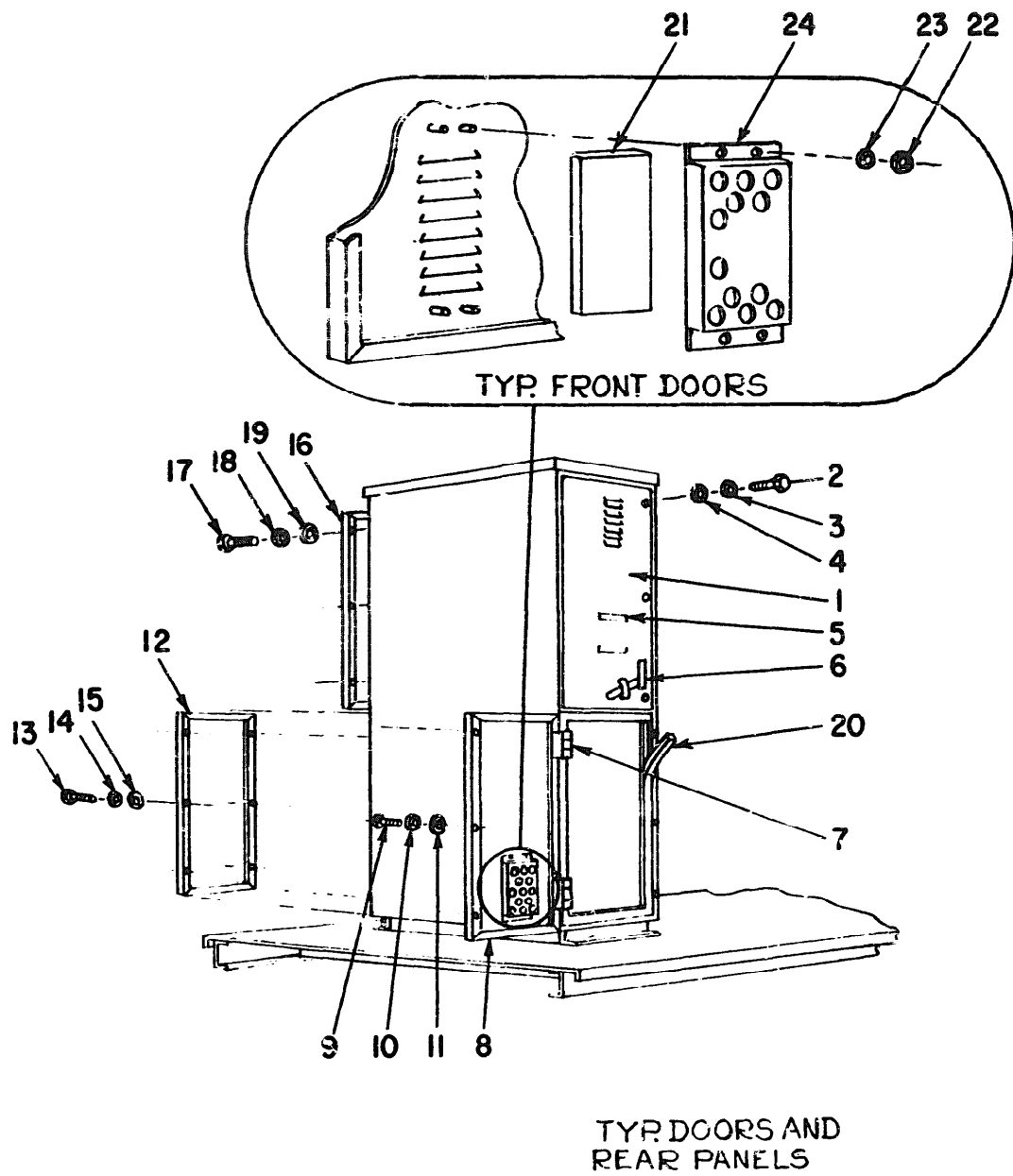


Figure 9. Clamp, Hot Line



ME 6120-250-34P/11

Figure 11. Doors, Front and Rear Panels

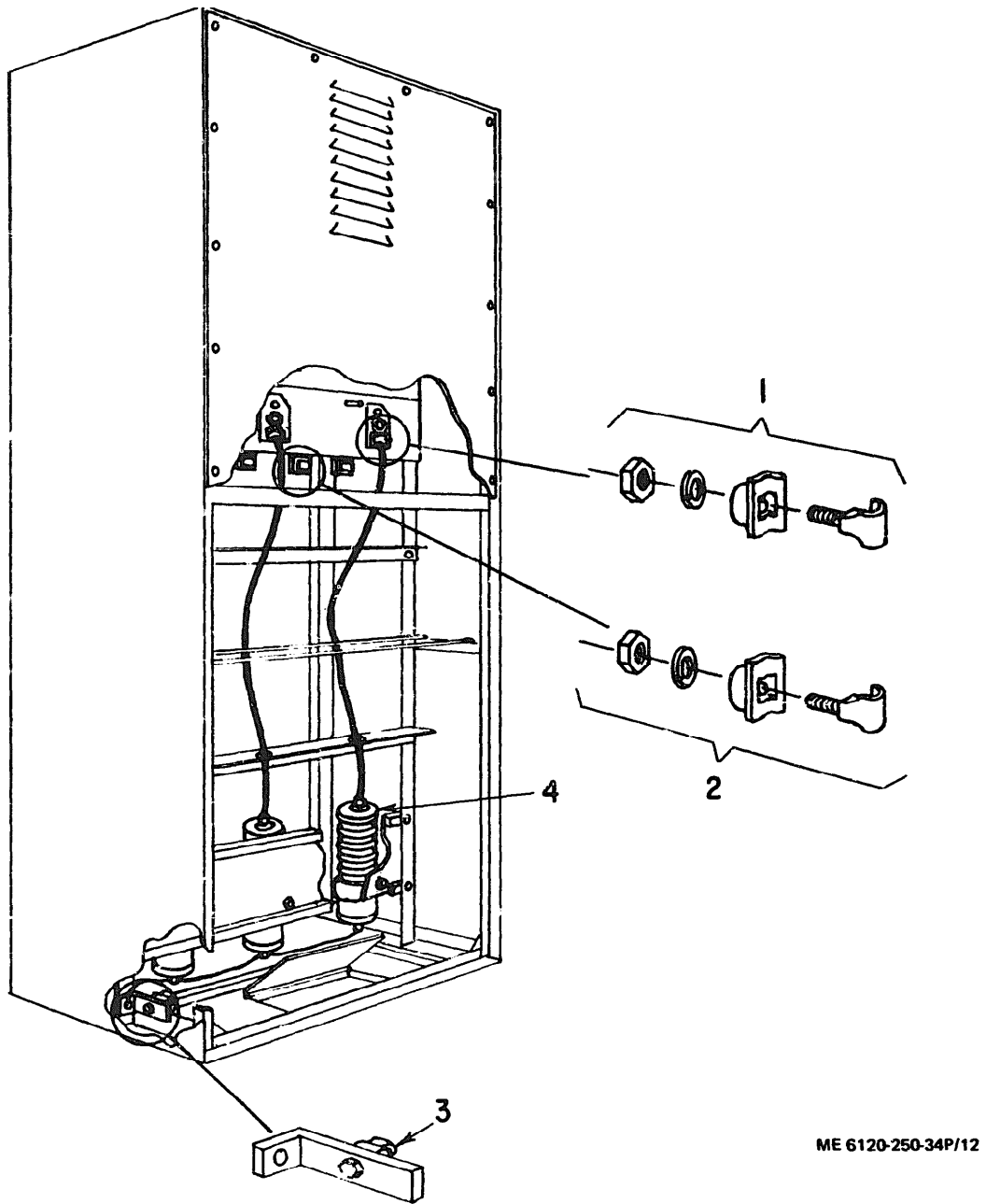
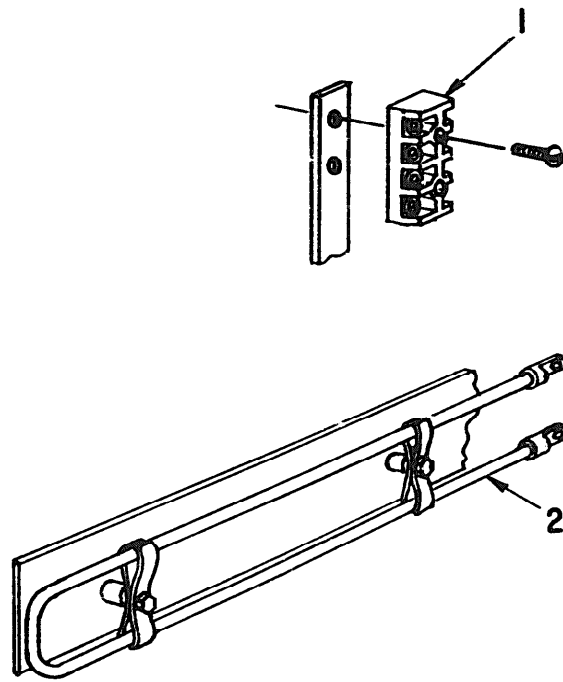


Figure 12. Connector, Terminals and Lightning Arrester



ME 6120-250-34P/13

Figure 13. Block, Terminal and Heater Strip

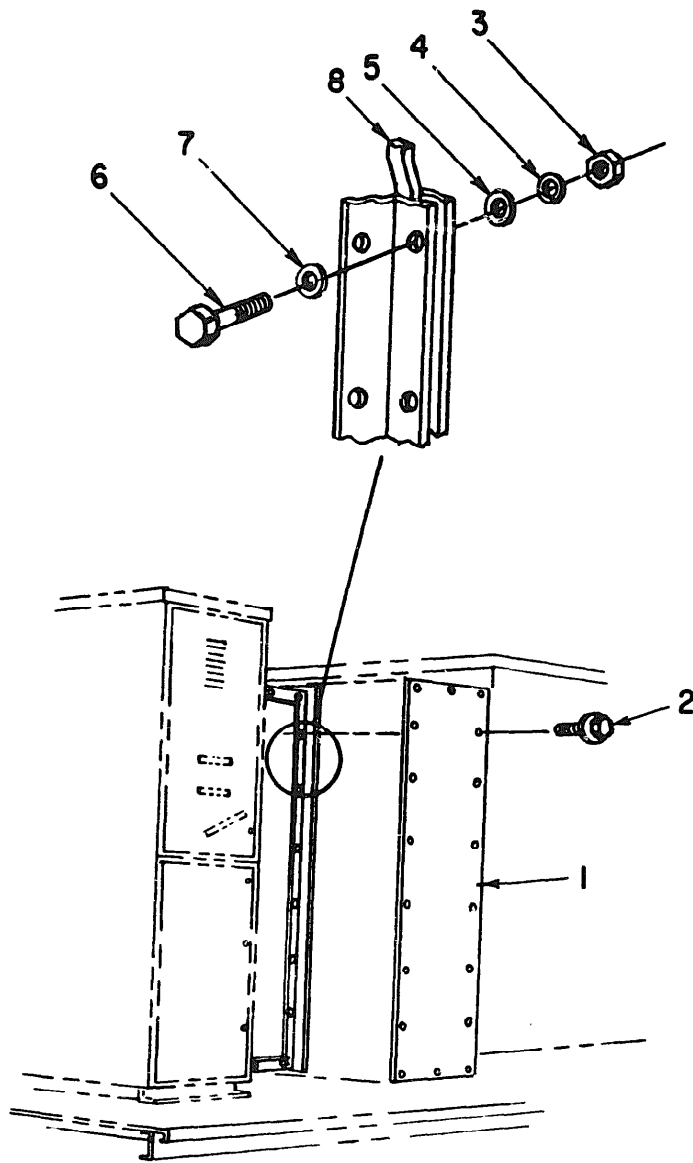


Figure 14. Panel, Side Transition

ME 6120-250-34P/14

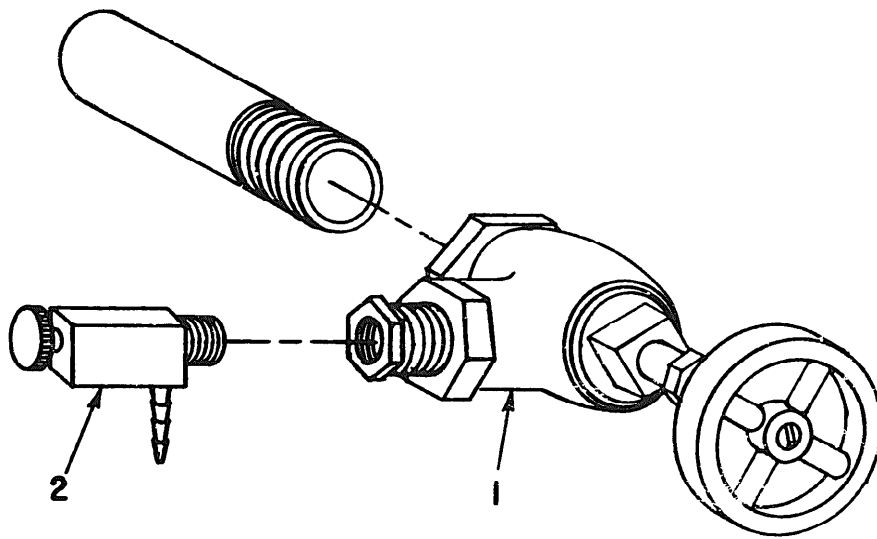


Figure 16, Valve, Drain

ME 6120-250-34P/16

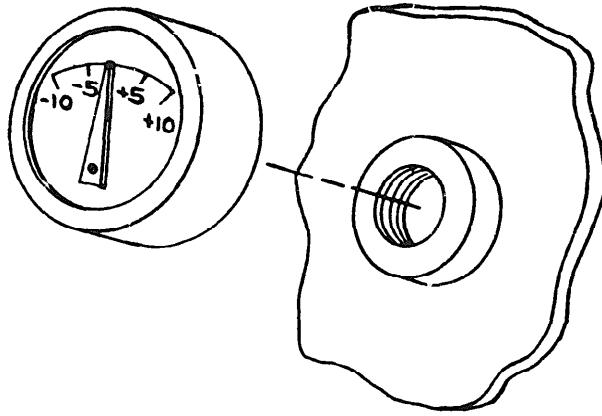
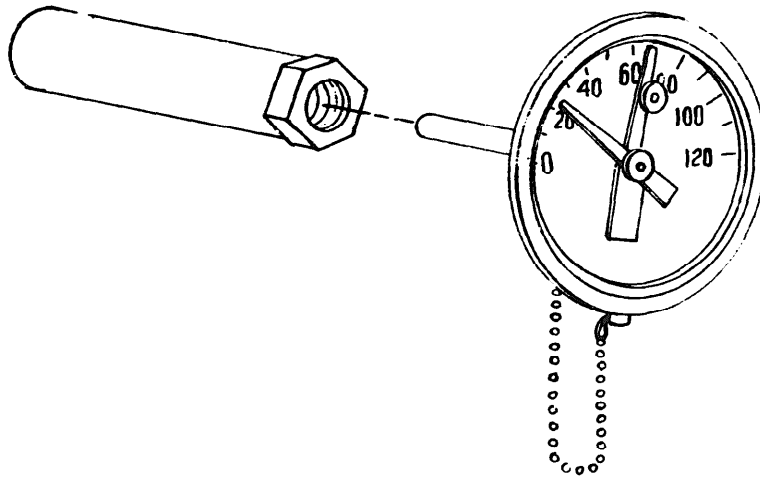


Figure 17, Gage, Pressure-Vacuum

ME 6120-250-34P/17



ME 6120-250-34P/18

Figure 18, Indicator, Oil Temperature

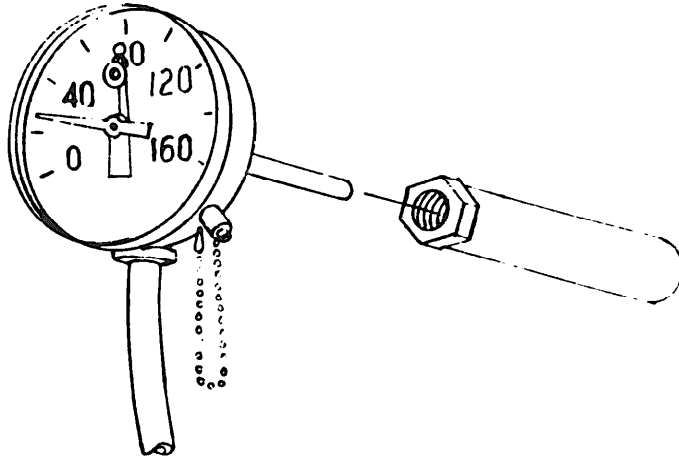
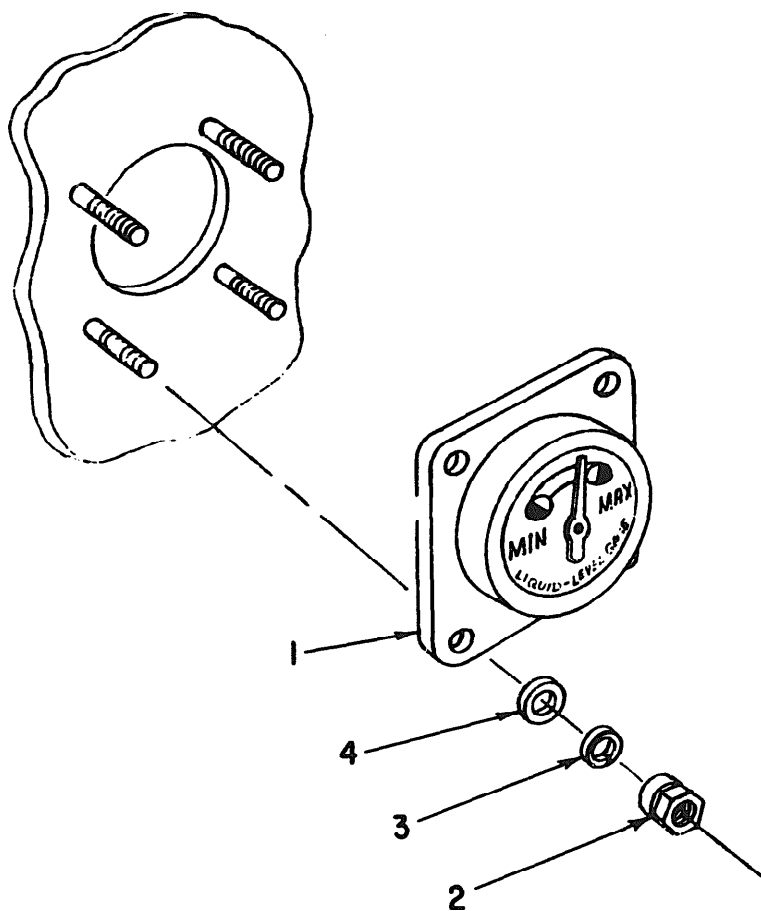


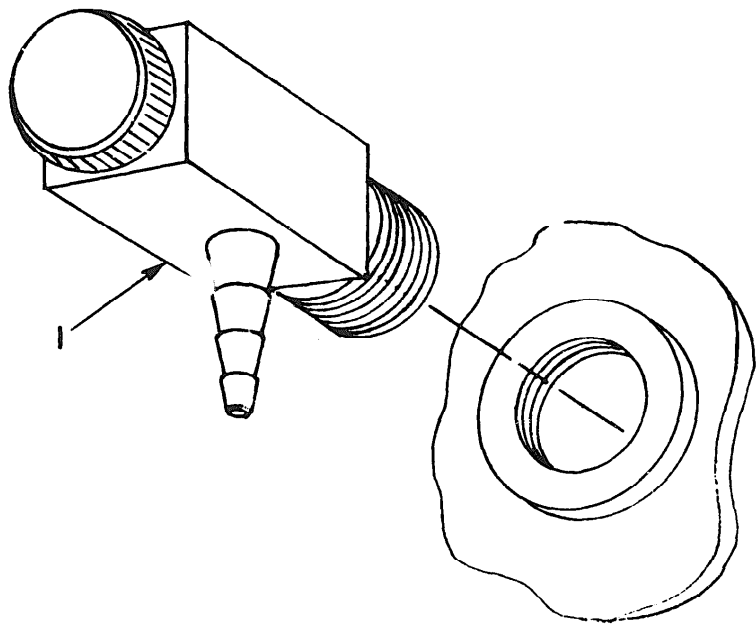
Figure 19, Indicator, Winding Temperature

ME 6120-250-34P/19



ME 6120-260-349/20

Figure 20, Gage, Liquid Level



ME 6120-250-34P/21

Figure 21. Valve, Pressure Relief

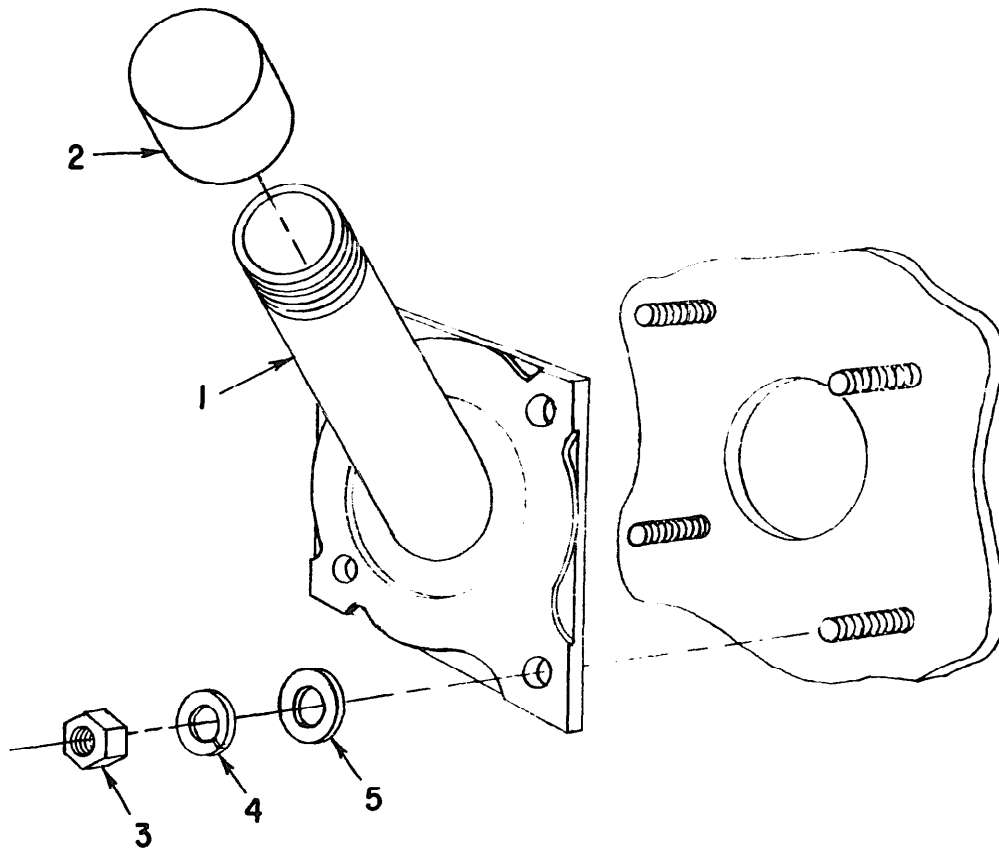


Figure 22. Pipe, Oil Fill

ME 6:20-250-34P/22

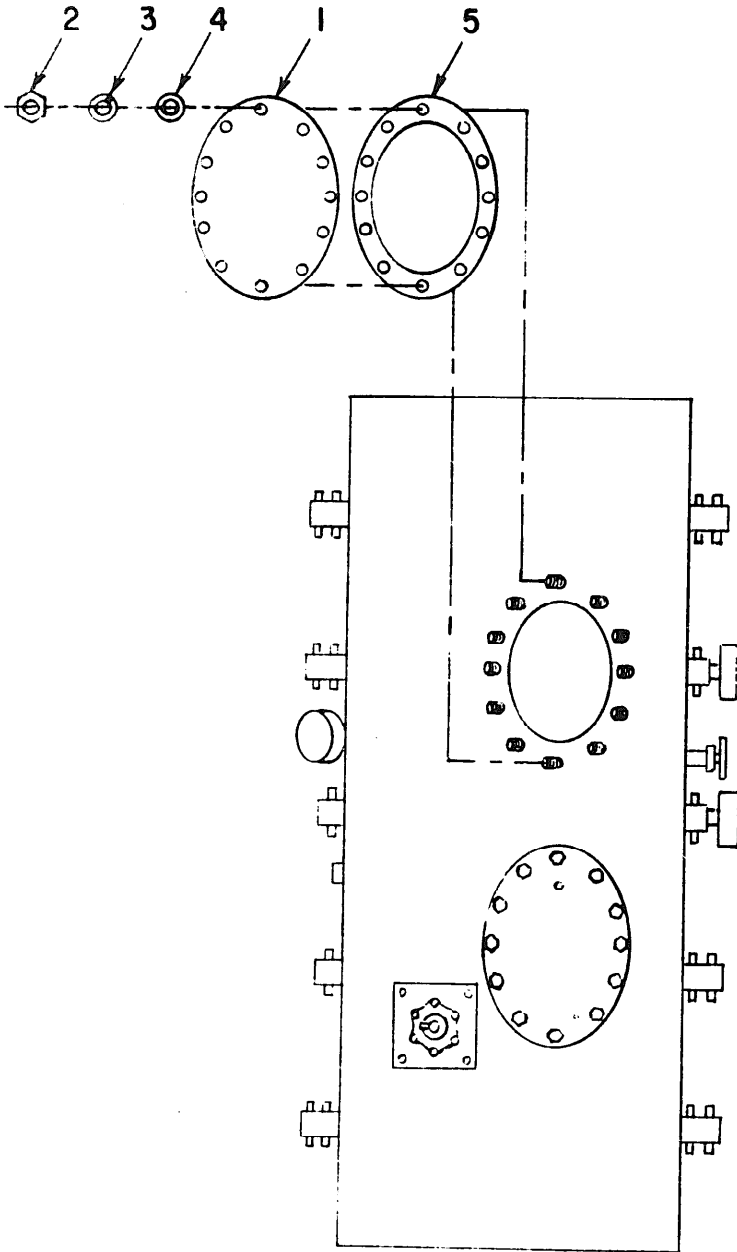
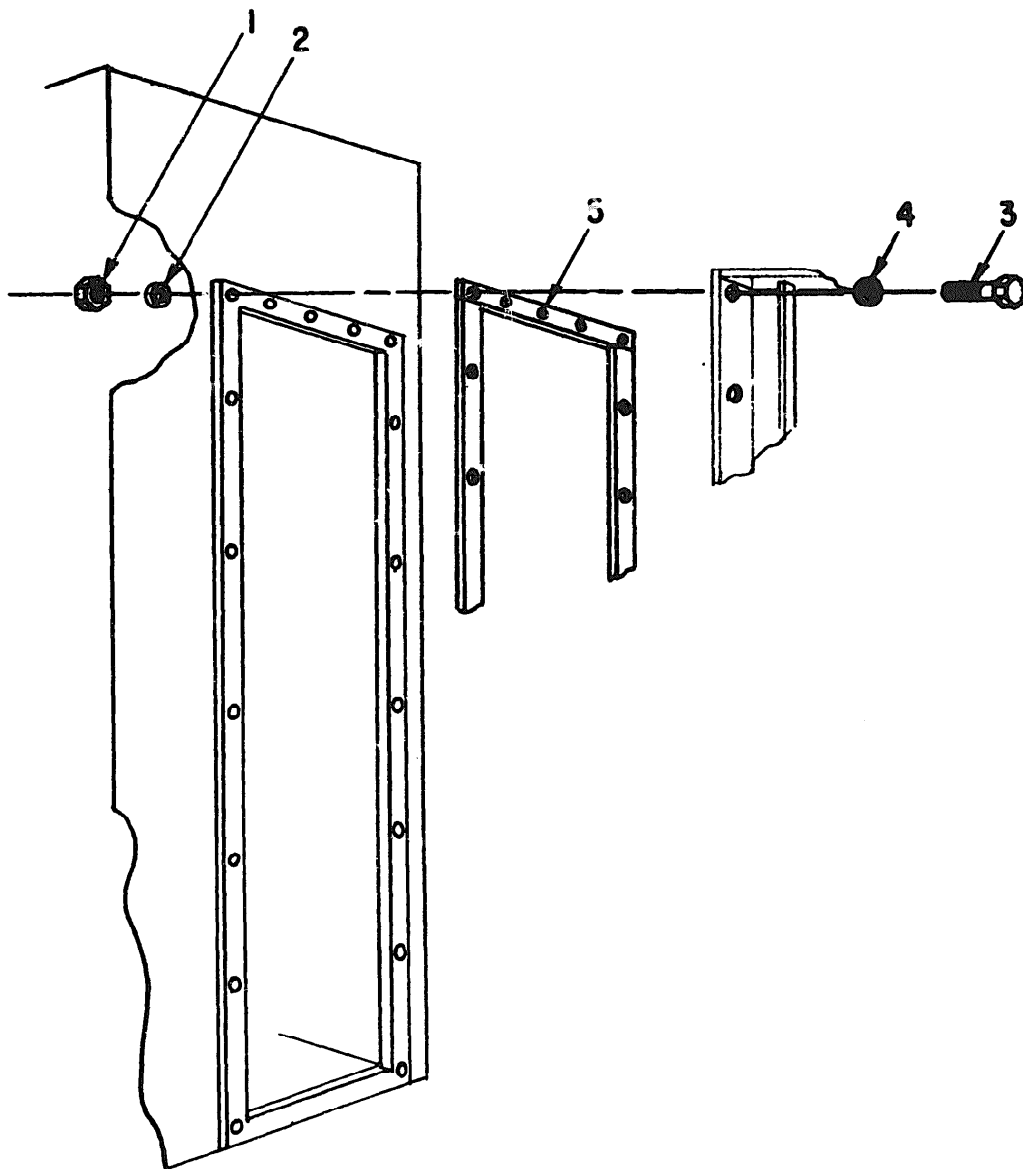


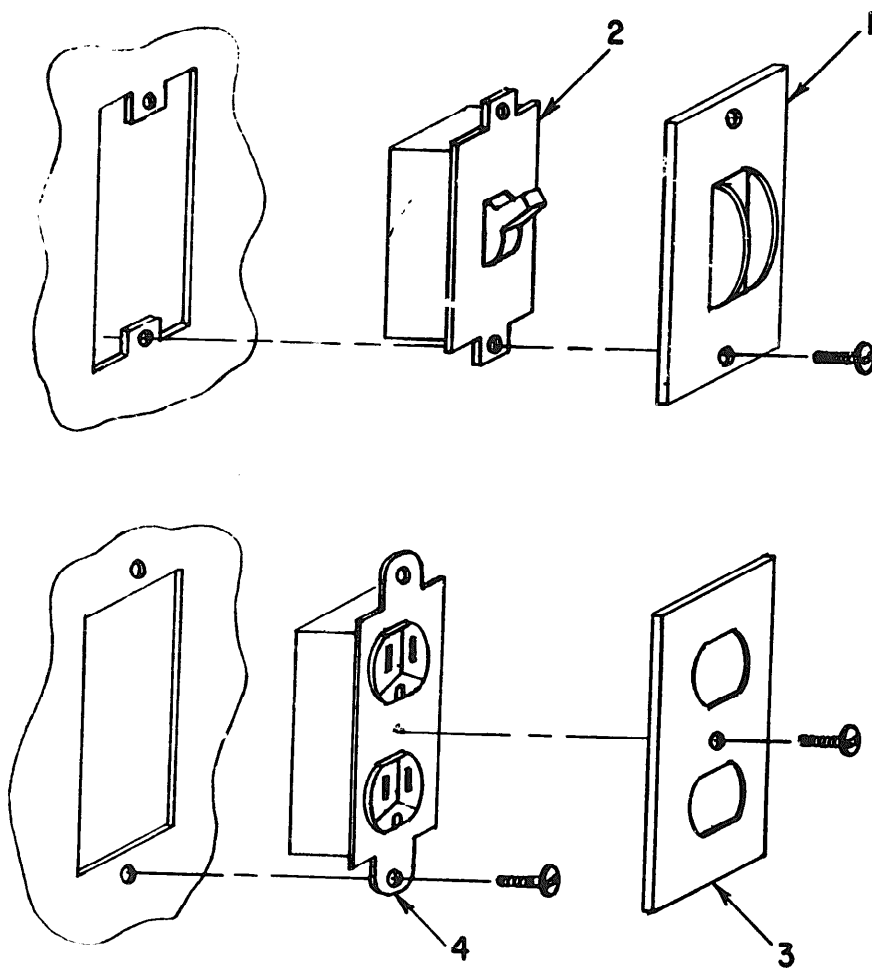
Figure 23. Cover, Hand Hole

ME 6120-250-34P/23



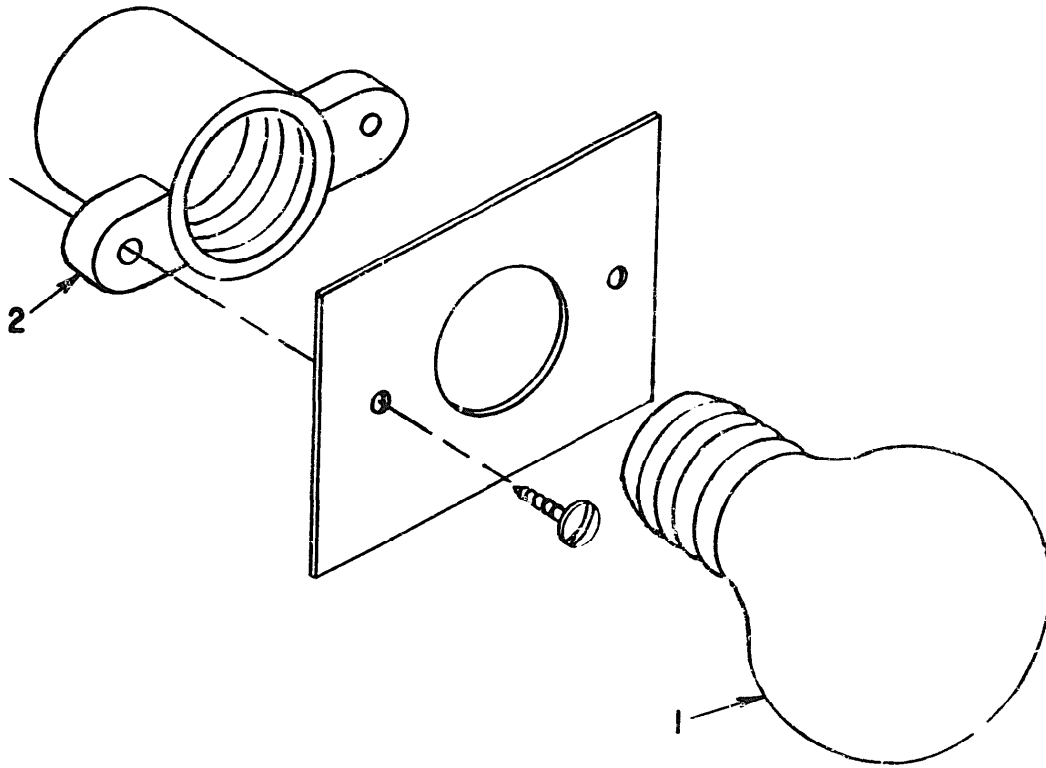
ME 6120-260-34P/25

Figure 25. Gasket, Transition



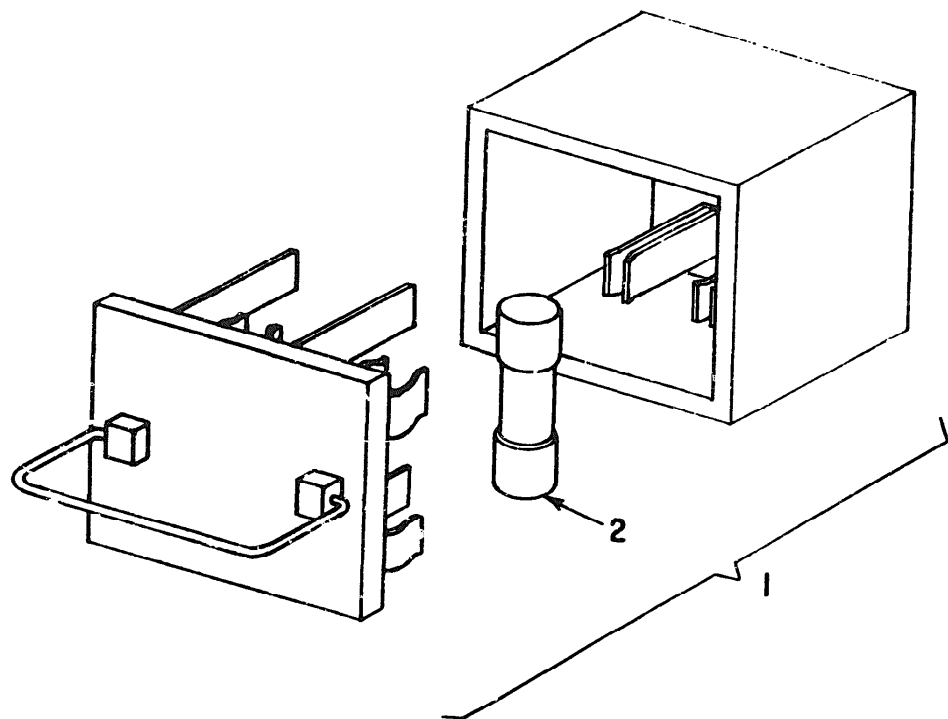
ME 6120-250-34P/26

Figure 26, Switch, Toggle and Duplex Outlet



ME 6120-250-34P/27

Figure 27. Holder, Lamp



ME 6120-250-34P/28

Figure 28, Holder, Fuse - 30A, 600V, 3-Pole

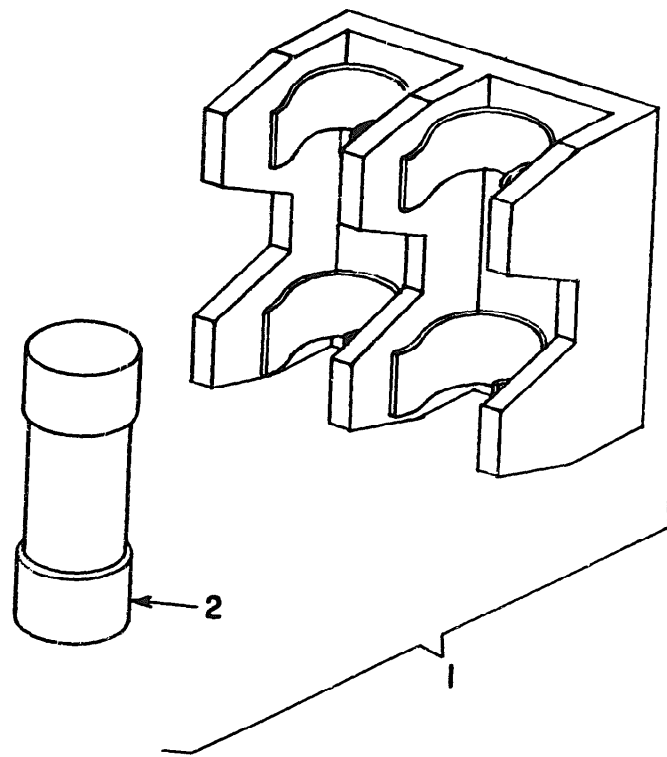
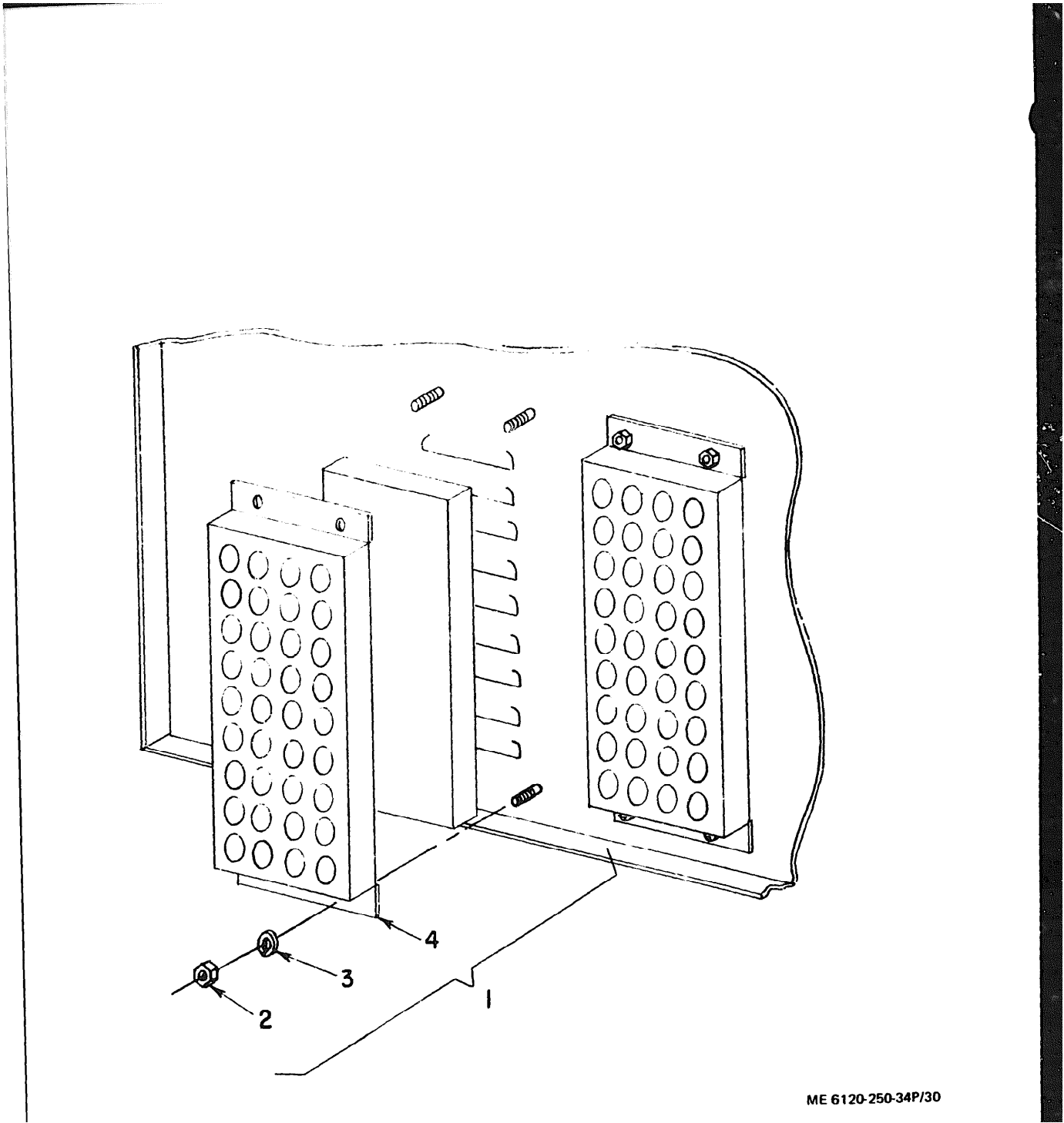


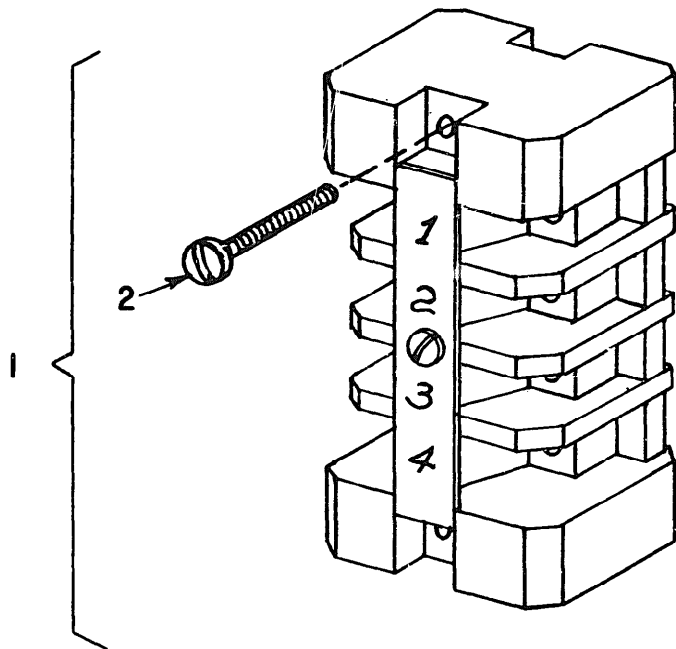
Figure 29. Holder, Fuse - 30A, 600V, 2-Pole

ME 6120 250-34P/29



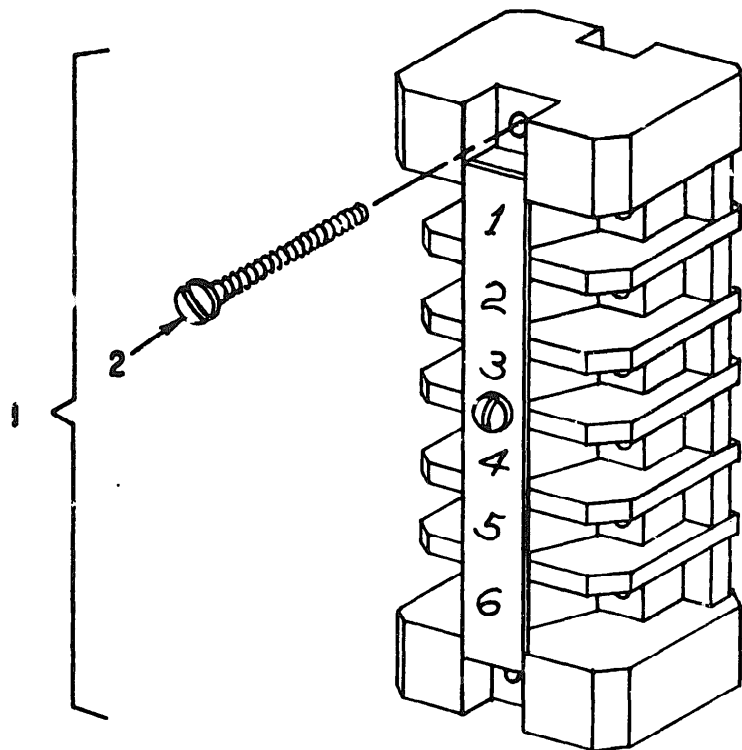
ME 6120-250-34P/30

Figure 30. Filter, Air



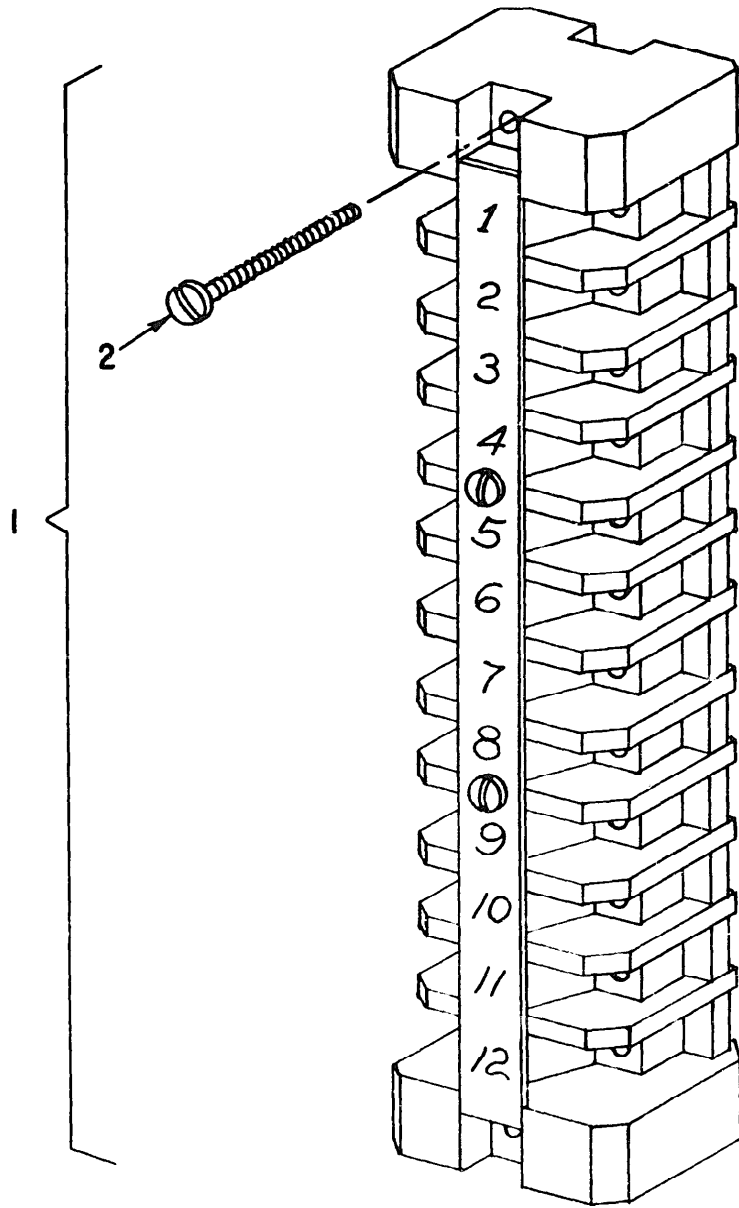
ME 6120-250-34P/31

Figure 31. Block, Terminal 4 Position



ME 6120-250-34P/32

Figure 32. Block, Terminal 6 Position



ME 6120-250-34P/33

Figure 33. Block, Terminal 12 Position

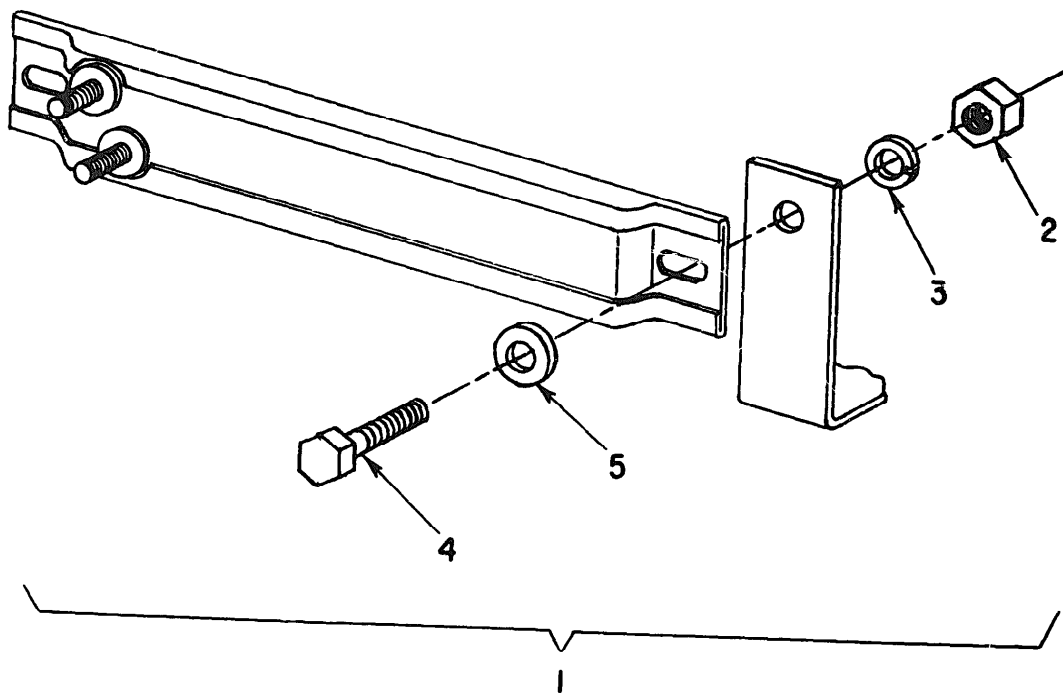
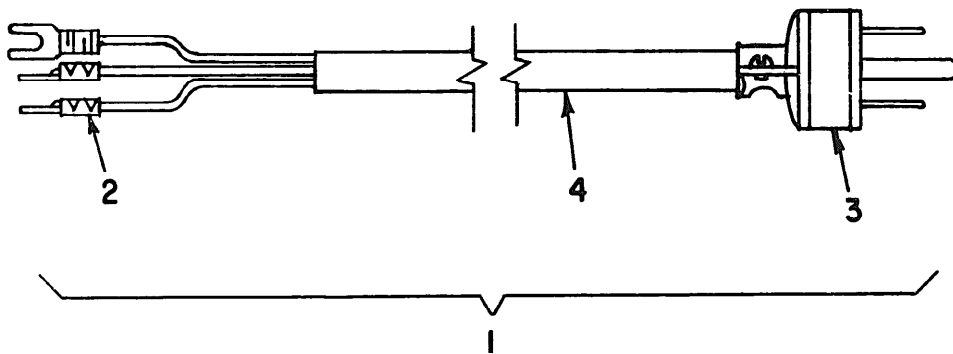


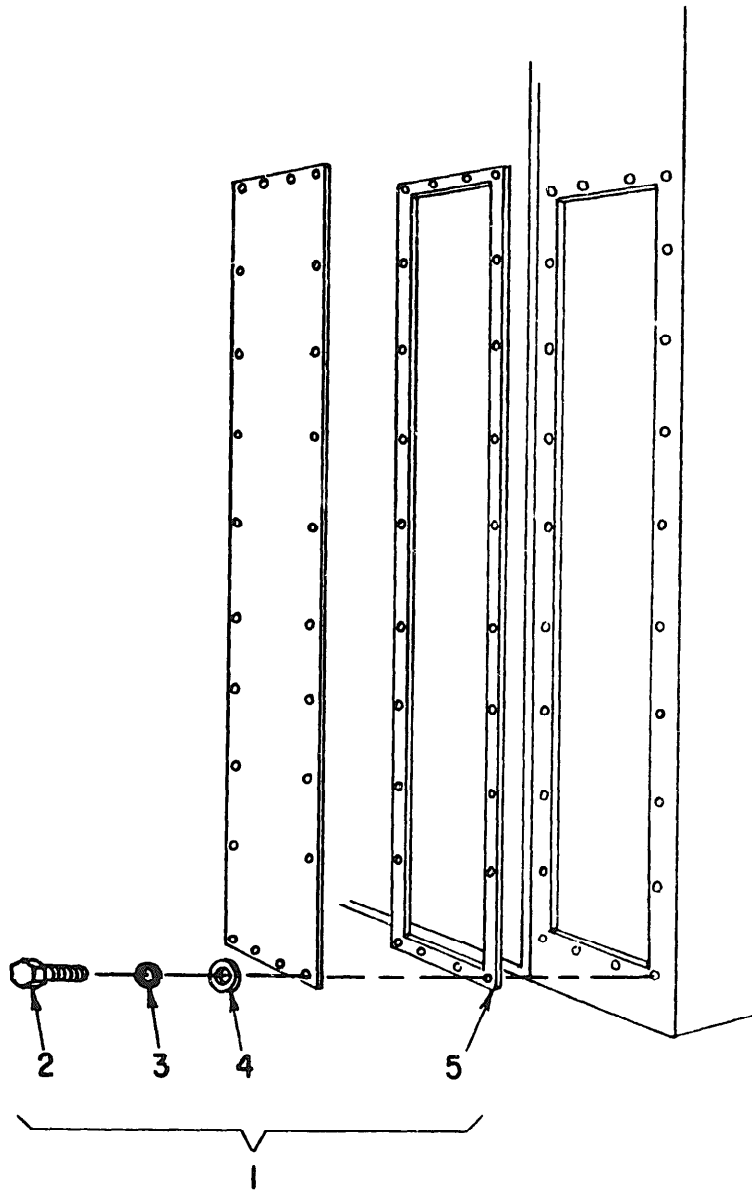
Figure 34. Heater Strip

ME 6120-250-34P/34



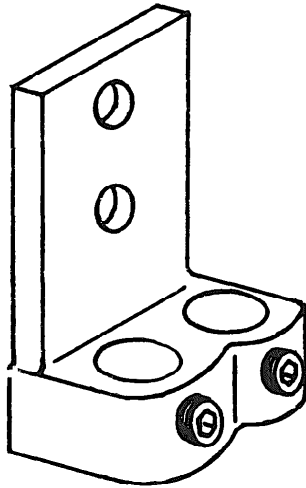
ME 6120-250-34P/35

Figure 35, Cord, Electric Extension 115V



ME 6120-250-34P/36

Figure 36. Panel, Transition



ME 6120-250-34P/37

Figure 37, Lug, Terminal

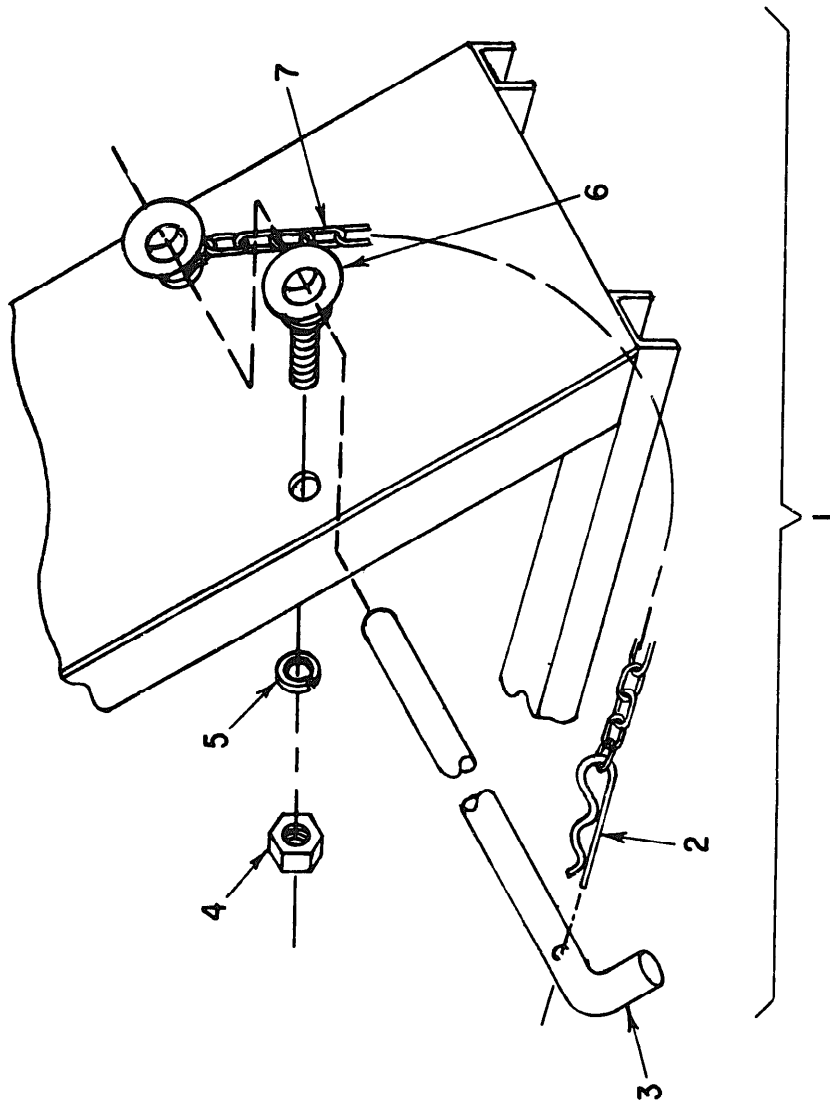


Figure 38. Locking Assembly, Cable Reel

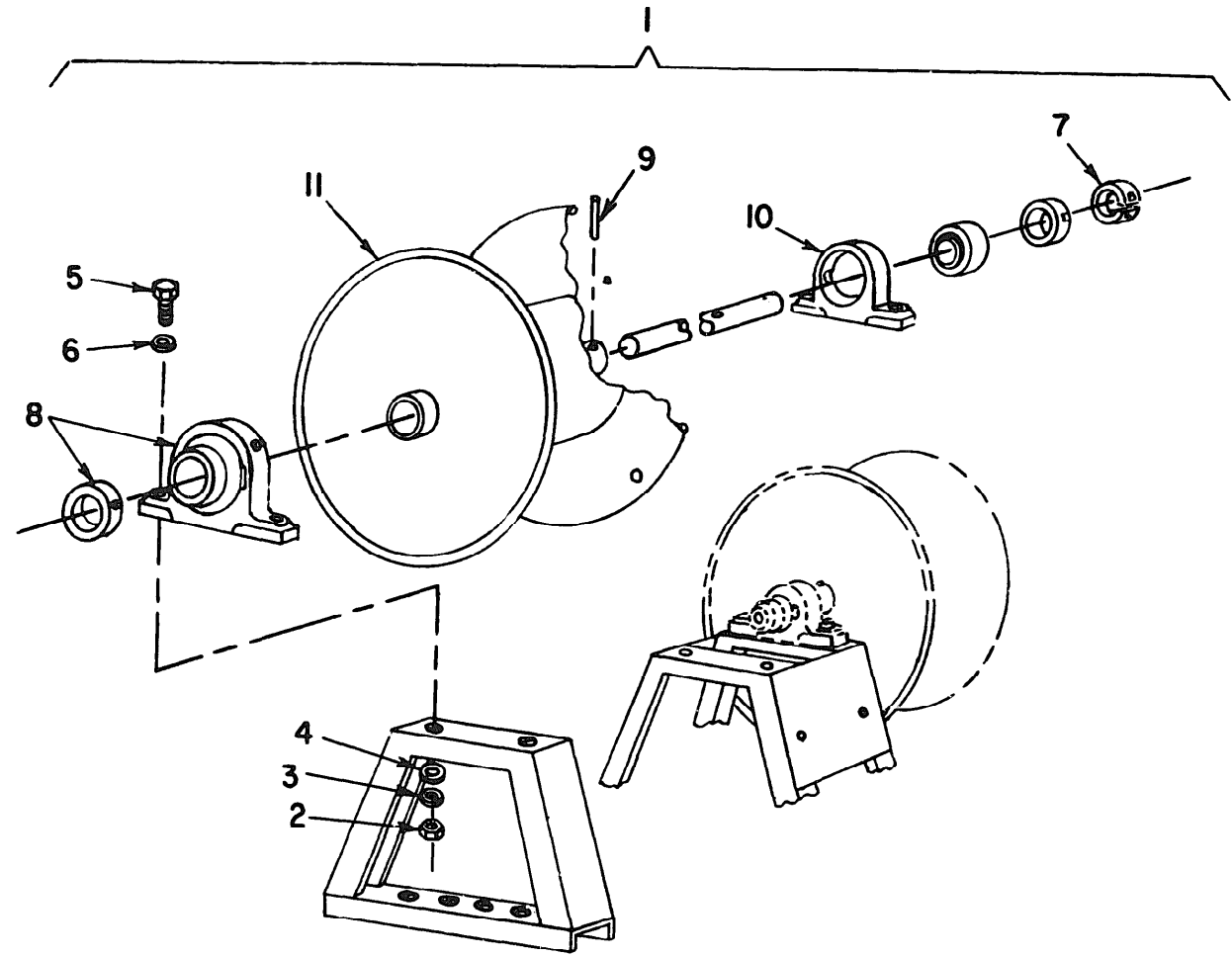
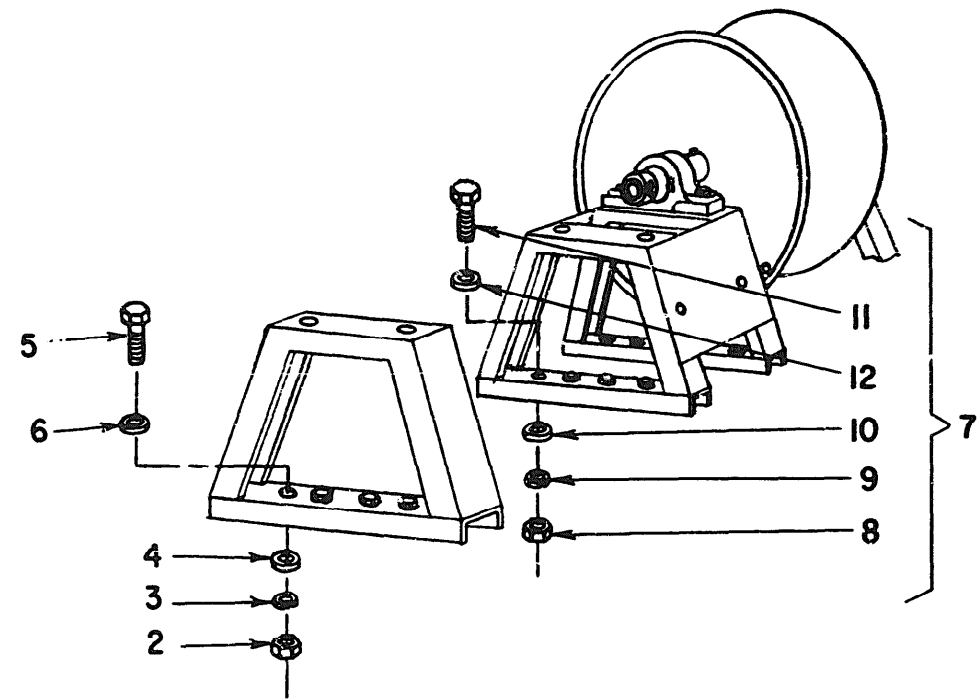


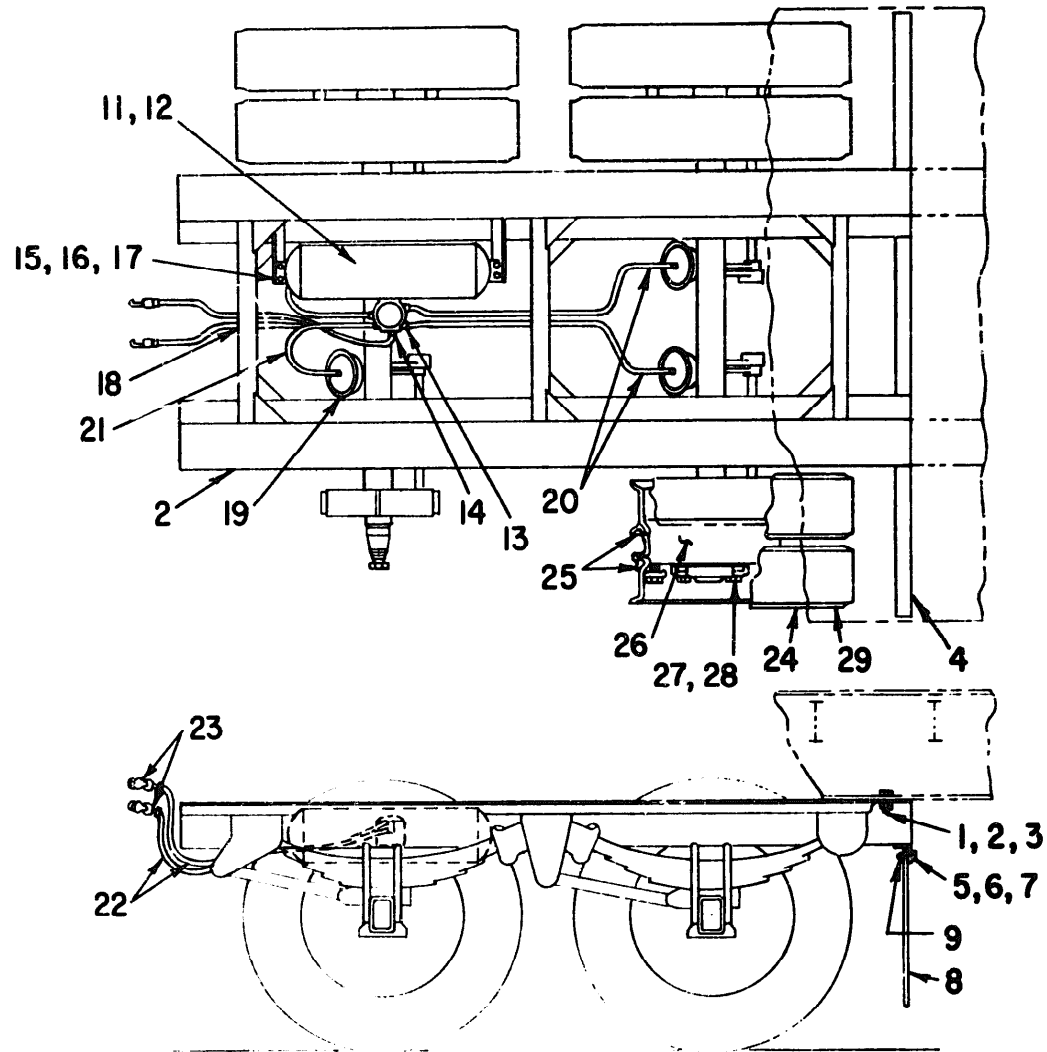
Figure 39. Reel, Cable Assembly

ME 6120-250-34P/39



ME 6120-250-34/P/40

Figure 40. Stand, Cable Reel Outer and Center



ME 6120-250-34P/41

Figure 41. Undercarriage Assembly

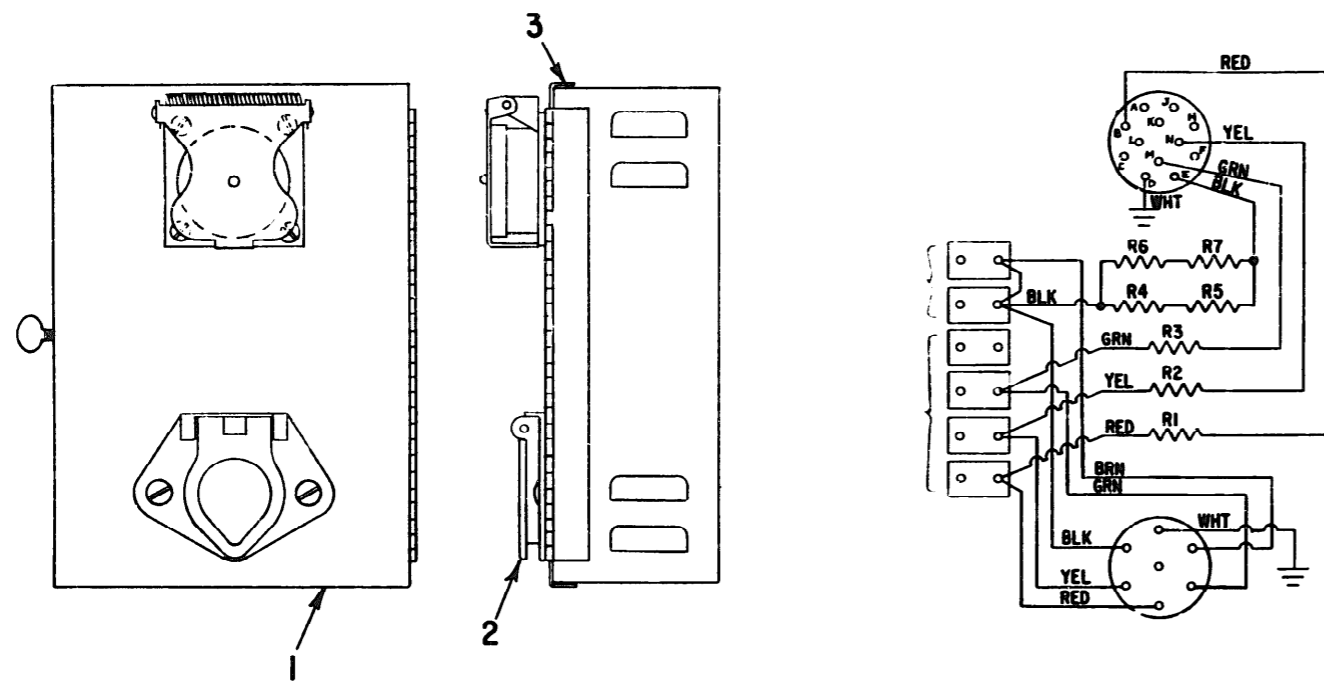


Figure 49. Box, Conversion

ME 6120-250-34P/49

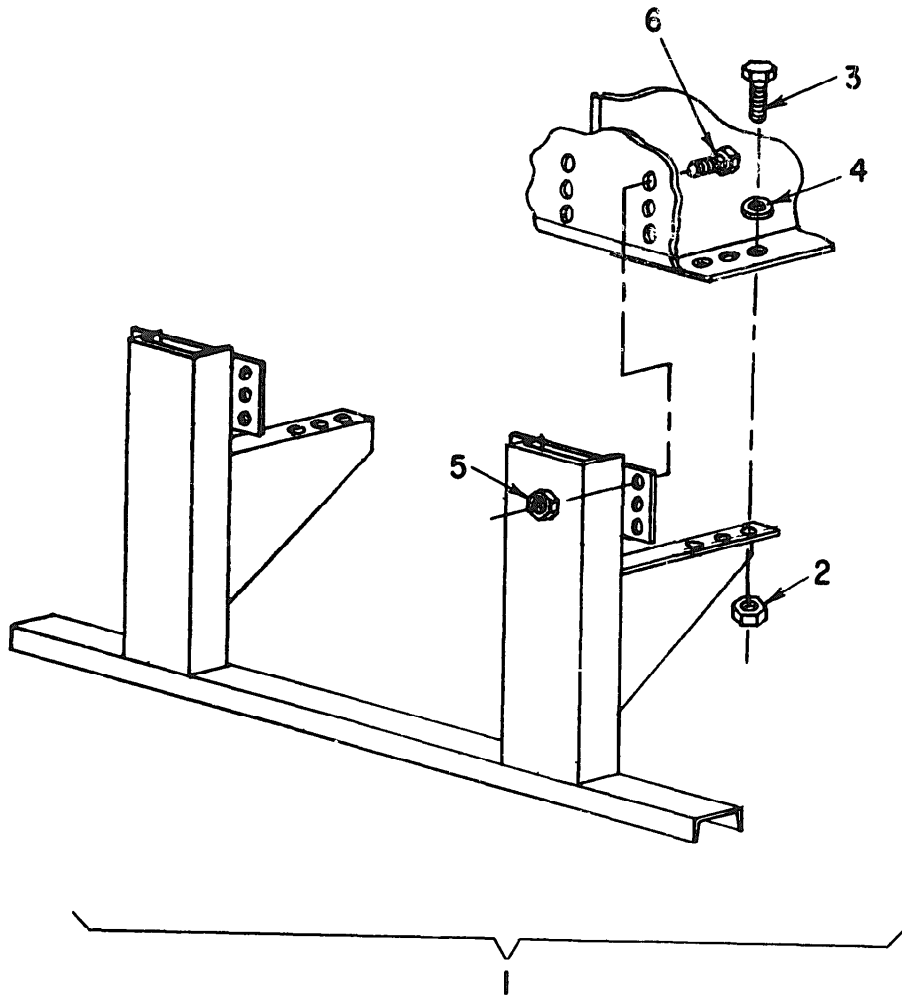
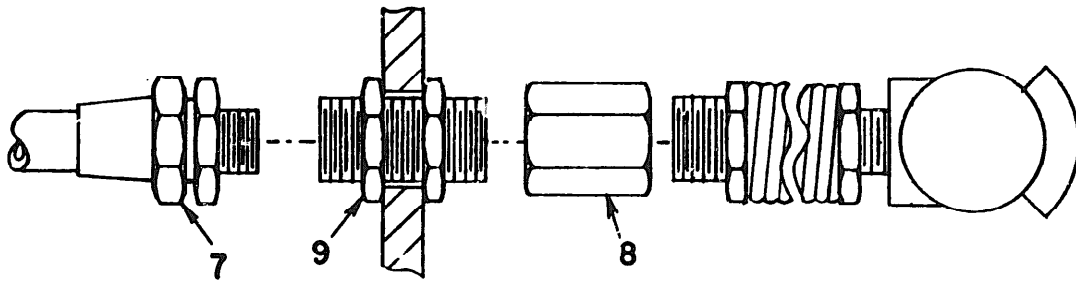
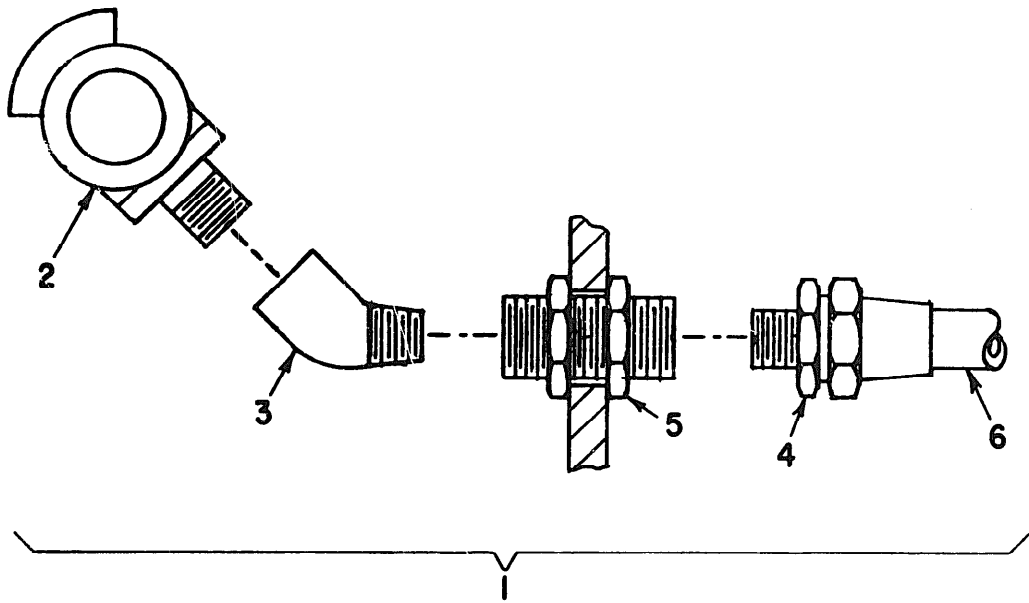


Figure 50. Bumper Assembly, Rear

ME 6120-250-34P/50



ME 6120-250-34P/51

Figure 51. System, Air Brake

Section V.

INDEX-FEDERAL STOCK NUMBER AND REFERENCE NUMBER
CROSS-REFERENCE TO FIGURE AND ITEM NUMBER

STOCK NUMBER	FIG No.	ITEM No.	STOCK NUMBER	FIG No.	ITEM No.
2530-124-5747	41	26	5305-820-6653	40	9
2610-275-7995	41	29	5305-883-9417	11	23
4730-069-1186	51	5	5305-883-9417	30	3
4730-069-1186	51	7	5305-883-9417	38	5
5730-069-1187	41	14	5305-883-9417	41	6
4730-595-0083	41	23	5315-194-2455	38	2
4730-595-0083	51	2	5330-929-6462	GR06	
4730-720-5002	51	4	5330-931-3012	GR06	
4730-720-5002	51	9	5920-728-8415	29	2
4730-051-0827	1	8	5920-728-8414	28	2
4730-051-0827	2	6	5930-044-6730	26	2
4730-051-0827	7	2	5930-672-7708	GR04	
4730-269-3211	41	7	5930-904-1778	GR04	
4730-269-3211	36	2	5935-283-4003	23	4
5305-269-3213	41	17	5940-178-0207	30	1
5305-269-3213	14	6	5970-840-8454	GR07	
5305-269-3217	25	3	5975-296-0621	8	1
5305-269-3217	11	2	6145-939-4952	GR01	
5305-269-3217	11	9	6220-030-2896	GR06	
5305-269-3217	11	13	6220-055-1184	GR06	
5305-269-3217	11	17	6220-099-7425	GR06	
5305-724-5914	1	7	6220-300-0284	GR06	
5305-724-5914	2	5	6220-825-1808	GR06	
5305-724-5914	7	3	6220-839-7461	GR06	
5305-724-5914	39	5	6220-914-6567	GR06	
5305-724-5914	40	11	7220-753-2982	GR01	
5305-724-5938	40	5			
5305-727-3804	6	2			
5305-087-4652	8	2			
5305-167-0821	41	15			
5305-167-0821	11	4			
5305-167-0821	11	4			
5305-167-0821	11	15			
5305-167-0821	11	19			
5305-167-0821	14	5			
5305-167-0821	14	7			
5305-167-0821	36	4			
5305-167-0821	41	16			
5305-167-0825	6	4			
5305-250-9477	7	5			
5305-250-9477	8	4			
5305-250-9477	8	4			
5305-250-9477	39	4			
5305-250-9477	39	6			
5305-250-9477	40	4			
5305-250-9477	40	6			
5305-250-9477	40	6			
5305-250-9477	40	10			
5305-250-9477	40	12			
5305-250-9477	20	4			
5305-250-9477	22	5			
5305-250-9477	23	4			
5305-250-9477	25	4			
5305-250-9477	11	22			
5305-250-9477	30	2			
5305-250-9477	38	4			
5305-637-9541	11	14			
5305-637-9541	11	18			
5305-637-9541	14	4			
5305-637-9541	20	4			
5305-637-9541	22	3			
5305-637-9541	23	3			
5305-637-9541	25	3			
5305-637-9541	36	3			
5305-637-9541	14	3			
5305-732-0558	20	3			
5305-732-0558	22	3			
5305-732-0558	23	3			
5305-732-0558	25	3			
5305-761-8920	41	1			
5305-763-8920	1	2			
5305-763-8920	2	2			
5305-763-8920	39	2			
5305-763-8920	40	2			
5305-763-8920	40	2			
5305-820-6653	8	3			
5305-820-6653	6	3			
5305-820-6653	7	4			
5305-820-6653	39	4			
5305-820-6653	40	4			

Section V. INDEX-FEDERAL STOCK NUMBER AND REFERENCE NUMBER
CROSS-REFERENCE TO FIGURE AND ITEM NUMBER

REFERENCE No.	Mfg CODE	FIG NO.	ITEM No.	REFERENCE No.	Mfg CODE	FIG NO.	ITEM No.
A12C12B5	08931	36		MS51967-20	96906	39	2
AN415-2	88044	38	5	MS51967-20	96906	40	2
AN960-1016	88044	1	2	MS51967-8	96906	14	2
AN960-1016	88044	2	9	MS51967-8	96906	20	3
AN960-1016	88044	6	7	MS51967-8	96906	23	2
AN960-1016	88044	7	4	MS51967-8	96906	25	3
AN960-1016	88044	8	5	MS51967-8	96906	39	2
AN960-1016	88044	20	4	MS9047-368	96906	34	1
AN960-1016	88044	39	6	MS90725-6	96906	40	9
AN960-1016	88044	39	4	MS90725-8	96906	11	4
AN960-1016	88044	40	6	MS90725-67	96906	11	7
AN960-1016	88044	40	10	MS90725-67	96906	11	9
AN960-1016	88044	40	12	MS90725-67	96906	11	13
AN960-616	88044	11	4	MS90725-165	96906	8	2
AN960-616	88044	11	11	MS90725-111	96906	50	6
AN960-616	88044	11	15	MS90725-114	96906	1	4
AN960-616	88044	11	19	MS90725-164	96906	2	6
AN960-616	88044	14	5	MS90725-164	96906	7	2
AN960-616	88044	22	7	MS90725-168	96906	7	7
AN960-616	88044	23	4	MS90725-168	96906	2	5
AN960-616	88044	25	4	MS90725-168	96906	7	3
AN960-616	88044	36	4	MS90725-168	96906	39	15
AN960-616	88044	40	16	MS90725-168	96906	40	11
A12C12B5	08931	14	8	MS90725-170	96906	40	5
A12C12B5	08931	25	8	MS90725-172	96906	6	2
A12C12B5	08931	36	5	MS90725-6	96906	34	4
CT500C	59730	GR07		MS90725-60	96906	36	2
C196-4131	02120		11	MS90725-60	96906	40	17
DAL0343P	91415			MS90725-62	96906	14	6
F504	44655			MS90725-62	96906	25	5
F505	44655			MS90725-67	96906	11	17
F507	44655			MS90725-8	96906	40	7
GE	03497			S196M14	98343	49	1
GE5625-3	03497		2	SF	20999	GR07	
FG8820	03497		2	SB4020K	73842	40	26
GF886	03497		2	S1-53116		35	
H281865	06853		13	TL40	20999	GR07	
IBS	81790			VL2-21785	74159	37	1
LSN2-ONE	74159		2	WCO059607	81348	26	4
LSN025NE	74159		1	WS896	81348	26	2
MS35224-63	96906		2	0224A9766U101A	03497	GR04	
MS35224-63	96906		2	0224A9766U102A	03497	GR04	
MS35338-17	96906		29	0673D05005H210G1	03497	29	1
MS35338-158	96906		23	0673D05005H210G2	03497	28	1
MS35338-158	96906		3	06886-111H	71041	39	8
MS35338-158	96906		3	0931D0100-037-54	03497	11	7
MS35338-158	96906		3	0531D0100-037-54	03497	11	7
MS35338-158	96506		6	0931D0100-037-54	03497	GR04	
MS35338-46	96906		3	1-30-122	91415	20	1
MS35338-46	96906		10	10RC8FX	59730	35	2
MS35338-46	96906		14	100059	78680	40	8
MS35338-46	96906		18	100155	78680	51	3
MS35338-46	96906		4	100158	78680	40	22
MS35338-46	96906		3	100159	78680	40	21
MS35338-46	96906		4	100165	78680	51	6
MS35338-46	96906		3	102916	78680	50	1
MS35338-46	96906		2	102951	78680	40	9
MS35338-46	96906		3	102954	78680	41	4
MS35338-50	96906		5	103011	78680	40	20
MS35338-50	96906		3	10453	98343	GR06	
MS35338-50	96906		3	109D191469	03497	11	1
MS35338-50	96906		4	109D1914P60	03497	11	16
MS35338-50	96906		8	109D5298P77	03497	GR04	
MS35338-50	96906		3	109D7908P55	03497	36	1
MS35338-50	96906		3	112A2621JDP1555	08931	23	5
MS35431-1	96906		9	1157	72635	GR06	
MS35649-2254	96906	GR06		127A8410P1	03497	11	5
MS35649-2254	96906		22	13	20999	GR07	5
MS35691-50	96906		3	133	72635	GR06	
MS35691-50	96906		3	138	72635	GR06	
MS39182-3	96906		4	141	72635	GR06	
MS51922-17	96906		15	150-40-12E	91414	18	
MS51922-33	96906		2	150-50-12G	91415	19	
MS51922-33	96906		5	150R	72635	GR06	
MS51967-2	96906		5	1507	98343	40	18
MS51967-2	96906		4	1512-15	98343	49	5
MS51967-20	96906		4	1512-30	98343	49	4
51967-20	96906		2	16SB1CA19X2	03497	GR04	

Section v. INDEX-FEDERAL STOCK NUMBER AND REFERENCE NUMBER
 CROSS REFERENCE TO FIGURE AND ITEM NUMBER

REFERENCE No.	Mfr CODE	FIG NO.	ITEM No.	REFERENCE No.	Mfr CODE	FIG NO.	ITEM No.
16SB1CF1Gx2	03497	GR04		6720	18889	40	27
1895	72635	GR06		67209FK1	18889	40	24
2A817A701	03497	34	1	70	20999	GR07	
2001A002-2	33469	GR07		744A208MDG4	08931	23	1
2001A003	33469	GR07		7510	81790	8	1
2001A003-5	33469	GR07		7731428E	98343	49	3
2001A004	33469	GR07		782ATA	98343	49	2
2001A008P50	33469	51	8	900X20	92065	40	2
2001B001	33469	39	10	9L24BAB101	03497	11	4
2001B005	33469	3	1	91573A035	39428	2	4
2001B005-1	33469	3	5	91573A035	39428	50	3
2001B005-2	33469	3	6	91573A036	39428	1	6
2001B006-1	33469	7	7	93071	41326	26	1
2001B006-2	33469	7	6	93100100-032-34	03497	11	12
2001B008	33469	8	5	93100100-037015	03497	11	8
2001B009	33469	6	5	93100100-091-45	03497	14	1
2001B013	33469	6	5	93100100-164-07	03497	11	3
2001B015	33469	35	1	93100100-180-03	03497	11	3
2001C002	33469	GR05		93101	41326	26	3
2001C002	33469	39	1	9414K19	39428	3	3
2001C002P14	33469	38	3	9414K19	39428	38	3
2001C002P3	33469	40	1				
2001C002P4	33469	40	7				
2001C002G2-20	33469	38	1				
2001C003G1	33469	1	1				
2001C003G2	33469	2	1				
2001C003P3	33469	1	2				
2001C003P4	33469	1	3				
2001C004	33469	7	1				
2001C007-1	33469	4					
2001C007-2	33469	5					
2001E001-P67	33469	30	1				
2001E001-67	33469	11	21				
2001E001P82	33469	14	2				
2001E001P84	33469	22	1				
2001E001-85	33469	22	2				
2001E001P87	33469	16	1				
2001E001P88	33469	16	2				
2001E001P88	33469	21	1				
205053	06853		4				
205053	06853	51	7				
205730	06853		5				
205730	06853	51	9				
207-92360	24457	GR05					
207-92466-1	24457	GR01					
20792466-1	24457						
218-00-010		GR06					
218-00-020	70418	GR06					
23	20999	GR07					
245C236G3	03497	GR04					
245C236P11	03497	GR04					
275150	06853	40	23				
275150	06853	51	2				
276222	06853	40	12				
282617	06853	40	11				
32L	28623	39	7				
33	20999	GR07					
3616T14	39428	3	4				
3616T14	39428	38	7				
3901T19	39428	3	2				
4D846G20	03497	13	2				
410C1	71348	GR01					
4460C	72635	GR06					
50-103-131LSSJ	29834	GR04					
50-103-021RSSJ	29834	GR04					
5364	74545	3 5	3				
54512	59730	GR07					
556A	72635	GR06					
556R	72635	GR06					
561	72635	GR06					
59A	72635	3 2	1				
590	72635	GR06					
602	72635	3 2	6				
6422482G12	03497	33	1				
6422482G204	03497	31	1				
6422482G206	03497		1				
6422482G206	03497	29	1				
6552986P2	03497	11	20				
6552986P2	03497	GR04					

By Order of the Secretary of the Army:

Official:

VERNE L. BOWERS
Major General United States Army
The Adjutant General

CREIGHTON W ABRAMS
General United States Army
Chief of staff

Distribution:

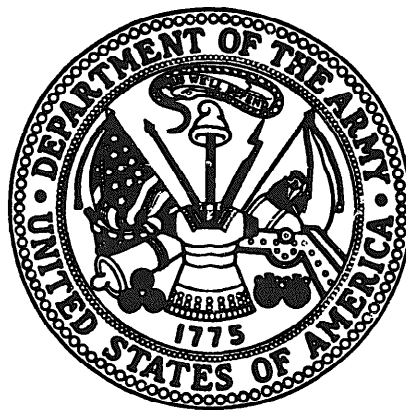
To be distributed in accordance with DA Form 12-25D, (qty rqr block no. 782)
Organizational maintenance requirements for Trailer Mounted Generators (PU's).

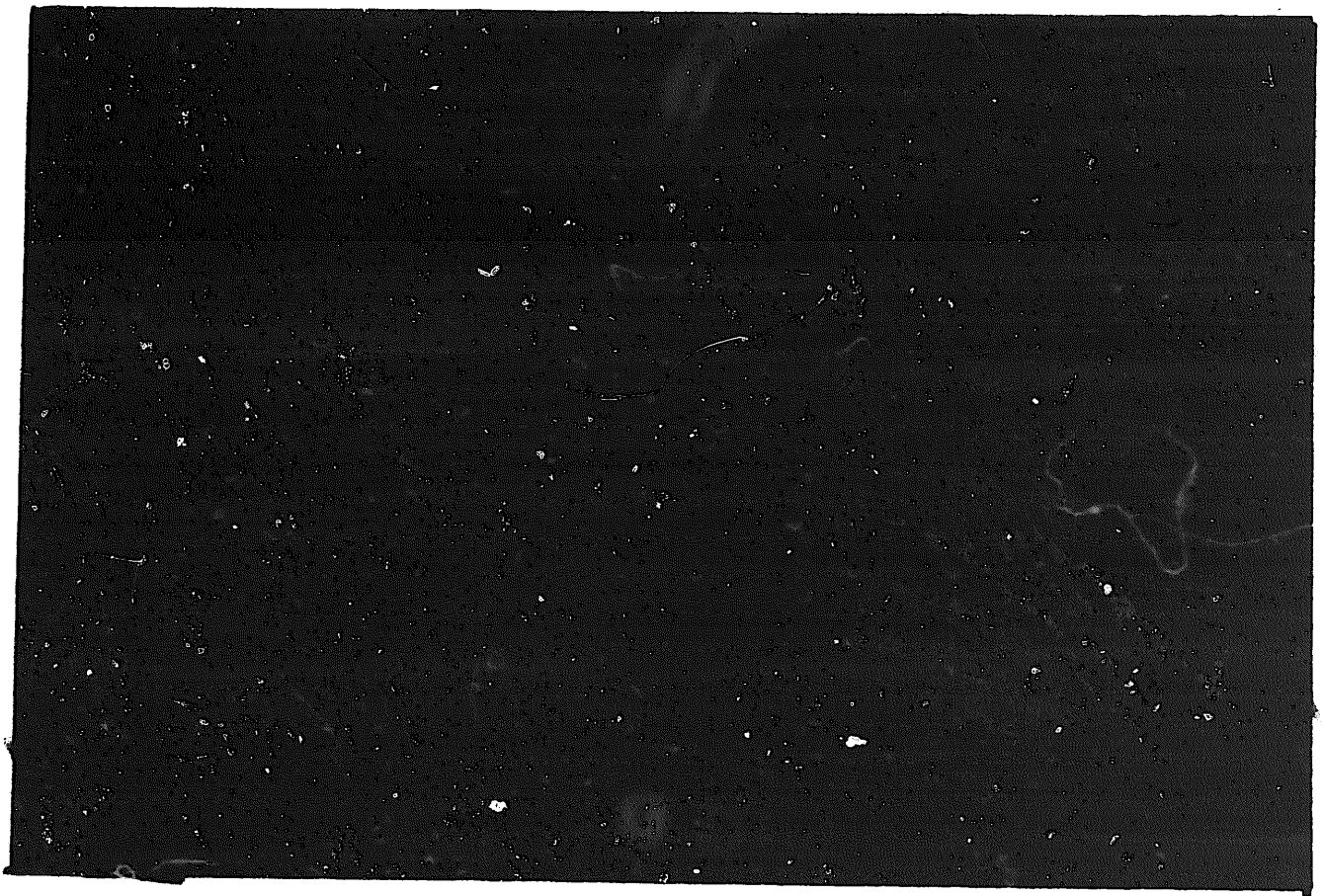
* U.S. GOVERNMENT PRINTING OFFICE: 1973-769749/438

END

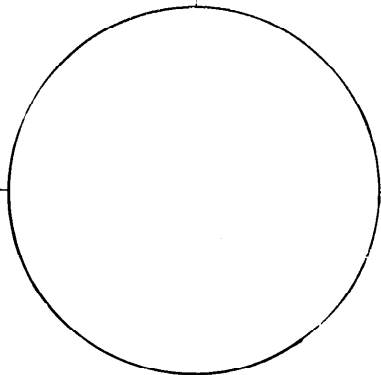
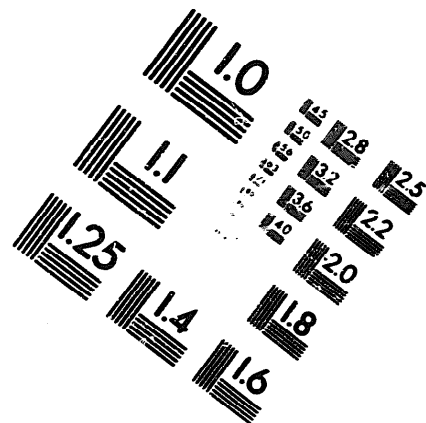
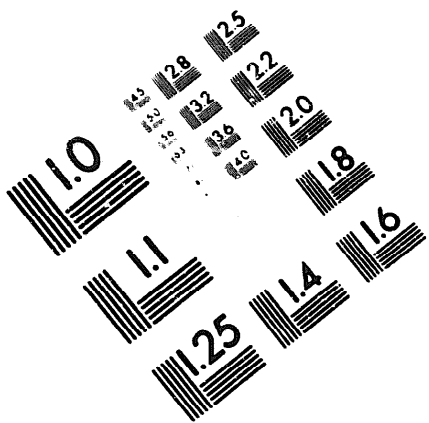
8-10-83

DATE





DEPARTMENT OF THE ARMY
MICROFORM
TEST TARGET



1.0 mm (e= 81 mm)

ABCDEFGHIJKLMN OPQRSTUVWXYZ1234567890
abcdefghijklmnopqrstuvwxyz\$%&/'%# 1/2 1/4 3/4 —=+ x&@*

1.5 mm (e= 1.09 mm)

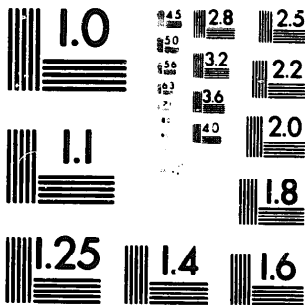
ABCDEFGHIJKLMN OPQRSTUVWXYZ1234567890
abcdefghijklmnopqrstuvwxyz\$%&/'%# 1/2 1/4 3/4 —=+ x&@*

2.0 mm (e= 1.37 mm)

ABCDEFGHIJKLMN OPQRSTUVWXYZ
abcdefghijklmnopqrstuvwxyz
1234567890\$%&/'%# 1/2 1/4 3/4 —=+ x&@*

2.5 mm (e= 1.77 mm)

ABCDEFGHIJKLMN OPQRSTUVWXYZ
abcdefghijklmnopqrstuvwxyz
1234567890\$%&/'%# 1/2 1/4 3/4 —=+ x&@*



1.0 mm (e= 81 mm)

ABCDEFGHIJKLMN OPQRSTUVWXYZ1234567890
abcdefghijklmnopqrstuvwxyz\$%&/'%# 1/2 1/4 3/4 —=+ x&@*

1.5 mm (e= 1.09 mm)

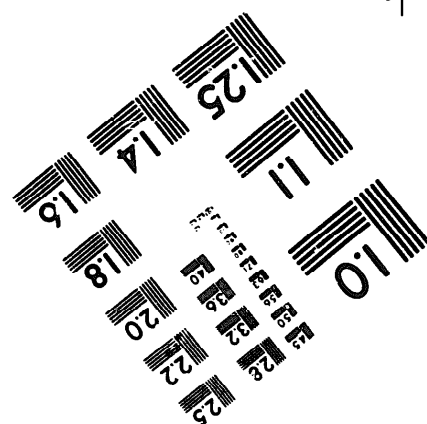
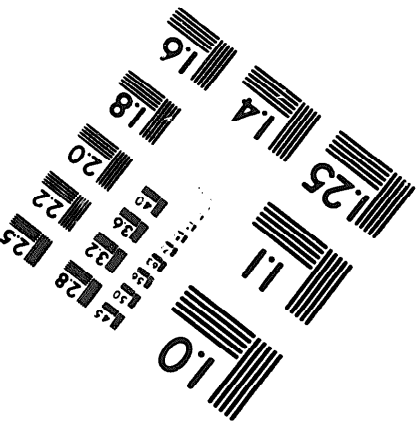
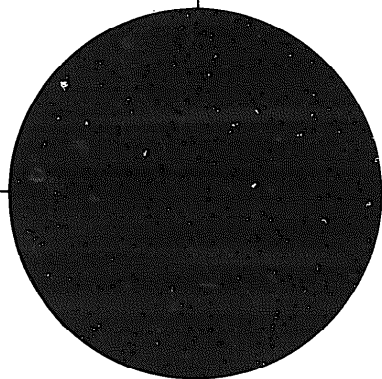
ABCDEFGHIJKLMN OPQRSTUVWXYZ1234567890
abcdefghijklmnopqrstuvwxyz\$%&/'%# 1/2 1/4 3/4 —=+ x&@*

2.0 mm (e= 1.37 mm)

ABCDEFGHIJKLMN OPQRSTUVWXYZ
abcdefghijklmnopqrstuvwxyz
1234567890\$%&/'%# 1/2 1/4 3/4 —=+ x&@*

2.5 mm (e= 1.77 mm)

ABCDEFGHIJKLMN OPQRSTUVWXYZ
abcdefghijklmnopqrstuvwxyz
1234567890\$%&/'%# 1/2 1/4 3/4 —=+ x&@*



250 MM